



Southlands School

Newsletter

Week Commencing 24th March 2025

Phone: 01590 675 350 Duty Officer Phone: 07785 521 842

Contact us on: Southlands.Admin@cambiangroup.com

Facebook: www.facebook.com/cambiangroup

* Kindness * Respect * Resilience * Safety * Cherish *

Letter from SLT

Dear Parents and Carers,

This week, with the sun being out, we have started to think about our outdoor area. Bob from Fun2Fish has been to assess the pond and will be helping us to improve the area around and in the pond, making it more user friendly as well as advising us on equipment that can be used by the whole school.

The board of Governors met with the Student Council on Wednesday, they were very impressed with the maturity and confidence with which they expressed their ideas. This term, there has been a focus on the menus and finding out what meals our students would like to see on the menu. Please do talk with your child about Student Council to which there is an open invitation to attend.

Ross Halford, Claire Bartlett and Katy Blake support the Student Council, students are invited to talk with any of these teachers to find out more.

Celebration Assembly

It was wonderful to hand out so many postcards in Celebration Assembly today, the Head of Education Award was given to a student who was unanimously voted by staff for putting in the maximum effort all round and for hard work on his Enterprise project.

ICT Workshop

Thank you to the parents who were able to attend our Parent Council meeting on Thursday, there was very positive feedback about Mr Strath's ICT workshop .

Letter from SLT Continued

Options Choice

Many of the year 9 students have already submitted their choices for next years courses. If you have not yet done so, please could you talk to your child and let the school know by Tuesday?

Egg Hunt

Next week, we look forward to the whole school joining in with the year 11 ASDAN Easter Egg hunt. We wish you all a happy weekend.

We hope you all have an enjoyable weekend in the promised sunshine.

Cat Cafe

This week some of our students went to the Cat Café in Bournemouth. This is a delightful destination for students who enjoy being in the presence of cats. Although the cats are sometimes asleep you can still find one or two who are in need of some attention and they wander freely around the café. The staff are pleasant and knowledgeable, also the food and drinks are really nice. There are vegetarian and gluten free options available.



Cookery

This week in cookery, we've had a wonderful range of activities across different year groups. The upper years worked on making chilli cheese cornbread, a savoury treat that allowed them to practice their baking and seasoning skills.



Meanwhile, the younger years created delicious homemade custard tarts topped with fresh fruit, focusing on pastry shaping, custard preparation, and fruit handling. For the primary group, we made summer berry pies, which gave them the chance to practice their fruit selection, pastry skills, and attention to detail when assembling their pies.



Throughout the week, we saw a fantastic display of skills, from careful fruit cutting to precise pastry work and excellent teamwork. It was great to see everyone leave cookery with a delicious item they'd made themselves, along with big smiles on their faces. A big well done to everyone for their hard work and enthusiasm in the kitchen!

I'm already looking forward to next week, when we'll be making fun and festive chocolate Easter treats. Keep up the excellent effort, everyone!

Legoland Trip

On Monday 24th March year 8 went on their well-deserved reward trip to Legoland. As we are a big class, we have quieter reward trips at half term and then to a big one at the end of term.



We had an amazing day. The Park was very quiet as most children are at school, so we went on almost all of the rides in the park without queuing. The weather was perfect so nothing could spoil our day.

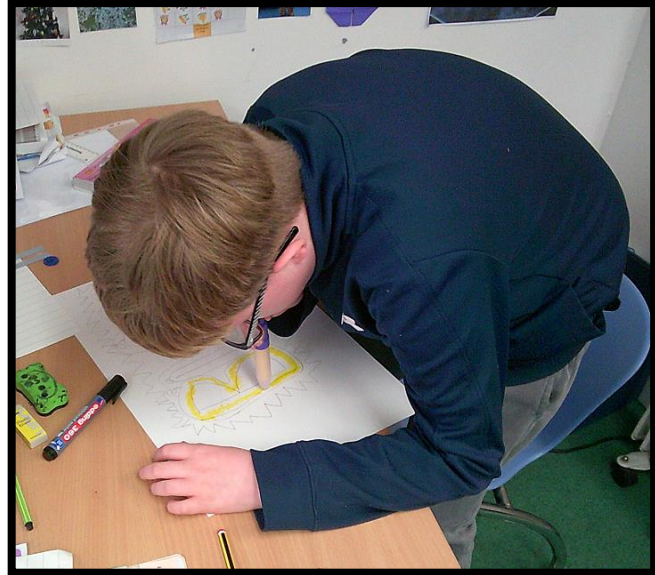


Many of our Tutees and staff went out of their comfort zone and tried rides that they usually avoid and thoroughly enjoyed it. We could not have been prouder of the way the tutor group represented Southlands School. They were polite, respectful and kind to each other and members of the public. We cannot wait for our next adventure.

Thank you to all of the tutee's parents that come to collect the young people at a later time which allowed us extra time at the park.

Primary 1

In Art in Primary 1 this week we have been looking at the graffiti artist 'Seen'. The children used blow pens to give a spray paint effect to create their own tag.



Head of Education Award

RF has won the Head of Education Award! It was a unanimous vote from all the staff. RF has gone the extra mile with his learning and has set up an incredible enterprise project in car washing. This has involved applying for a loan from the school to buy the hoover he needed which he has managed to pay off. He has taken bookings, got to grips with money handling and has put in a lot of effort to make sure the cars are finished to a high standard. Very well-deserved, well done RF!



Lower Phase Group



This week in Lower Phase Group we have been learning about the skeleton and naming bones. The students enjoyed making movable skeletons, discussing the bones as we attached them. We were all really impressed at how quickly the class learned the names of the bones and their function.

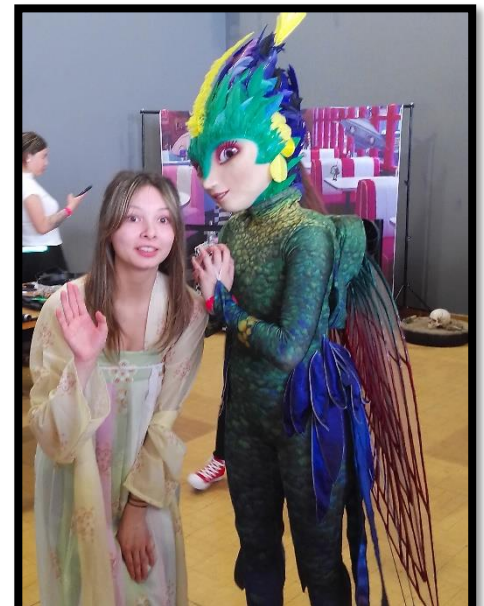


Setthorns Trip

Last weekend, on Sunday, both DT and NB from Setthorns Home went to Comic Con in Bournemouth, where they were able to see amazing Cosplay (people dressing in costume as their favourite characters from fantasy / sci-fi), and lots of stalls to buy from.



Will they dress up themselves next time?



Lower Phase Group Trip

For Outdoor Learning Lower Phase Group visited Keyhaven, near Milford on Sea. The sun shone whilst the students enjoyed crabbing at the bridge.

Although no crabs were caught, the class took in the local wildlife and enjoyed the experience. We'll have to try again soon!



For their next attempt they may have to search other areas, and they are taking suggestions for the next location! However this time they successfully evaded the students!

Better
luck next
time!



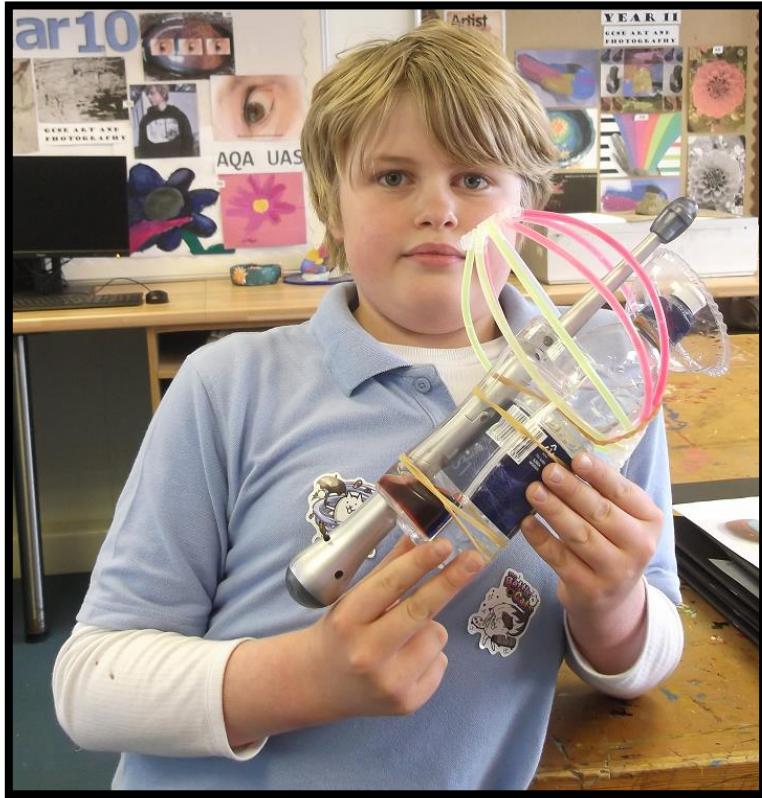
Coach House Trip



Last week TRT took a trip with Coach Home staff to Westquay Shopping Centre to see the sights. They enjoyed their time there so much that when they were leaving the Smoothie bar was closing. They managed to get a free Hulk smoothie from Fuel because the waitress did not want to waste it. Lucky boy!

Art

On Wednesday afternoon, our very own artist, FF completed her A0 canvas. FF said she was very happy that her 86 hours of painting time and 10 art lessons had finally seen the completion of her work of art. Amazing work FF. Extremely proud of you.



During Wednesday end of day tutor time, LL bounded into the art room to show me his incredible water soaker sculpture. I wanted to 'bottle' that enthusiasm. The creativity behind this piece demonstrates skill and thought. Way to go LL!

LJH, one of our year 9 artists, created the very first pair of expertly designed Shrek style Converse high tops. I am not sure what made me laugh more, ordering Shrek ears from Amazon or watching LJH parade around the art room in the ears. LJH, be extremely proud of this piece of work; I am! Brilliantly funny LJH.

You will all have to watch this space for further images of the year 9's wearing their designed shoes...

More exciting projects will be heading this way.



Upper Phase Group

Recently Basingstoke maternity hospital made an appeal for knitted baby hats as they were running low. These hats are for the newborns that they welcome in their hospital and are essential for keeping babies' heads warm right after birth.

As you may recall reading in our previous newsletters that, as part of an ASDAN project, Upper Phase Group made baby hats and donated them to the delivery suite.

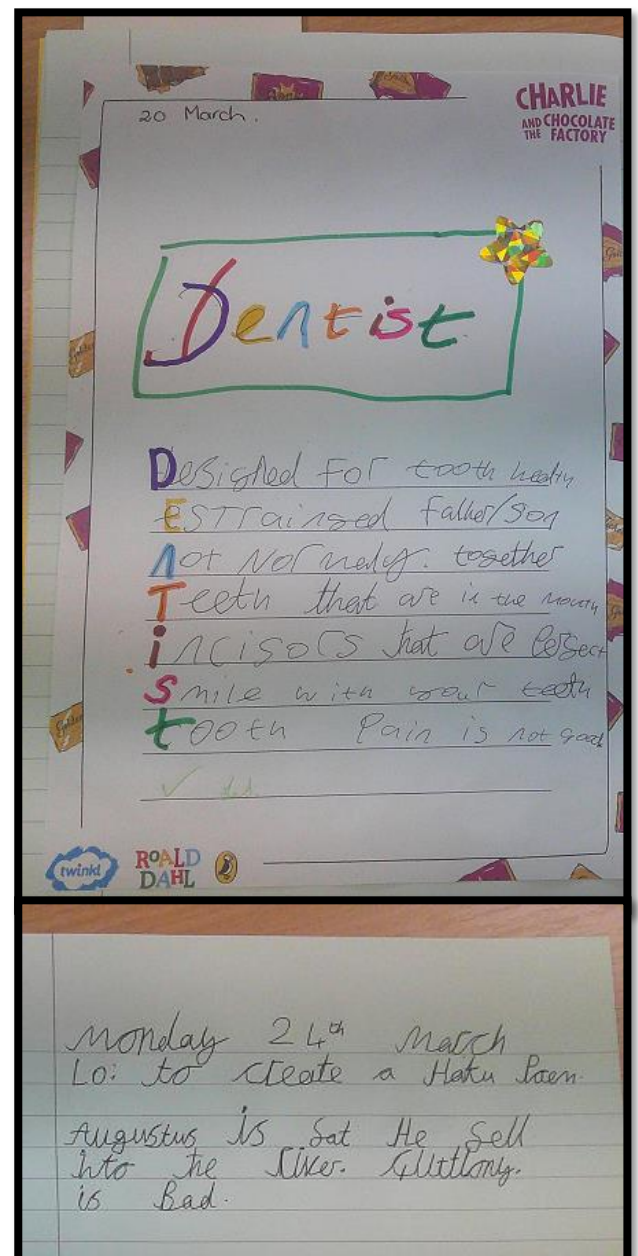
On Monday everyone was overwhelmed when FF opened a lovely thank you letter from them.



This term Upper Phase Group have been studying Charlie and the Chocolate Factory! In English we have been learning about different types of poems.

RF has shown a great understanding in his work and has created a colourful acrostic poem and a Haiku. A Haiku is a Japanese poem consisting of 3 lines. One line with 5 syllables, then another line with 7 syllables, then 5 again in the last line.

Well done!



Upcoming Exams Timetable

May

12 th	AM	English Literature Paper 1 Maths FS Level 1 and 2 – Paper 1 – Non-Calculator Maths FS Level 1 and 2 – Paper 2 – Calculator
13 th	PM	Triple Biology Paper Combined Science - Paper 1F - Biology
14 th	AM	Geography Paper 1: Living with the physical environment
15 th	AM	GCSE Maths – Paper 1 – Non-Calculator
16 th	AM	English FS Level 1+2 Paper 1 – Reading
	PM	English FS Level 1+2 – Writing
19 th	AM	Triple Chemistry Paper 1 Combined Science – Paper 1F – Chemistry
20 th	AM	English Literature Paper 2
22 nd	AM	Triple Physics Paper 1 Combined Science – Paper 1F – Physics
23 rd	AM	English Language Paper 1
31 st		GCSE Art and Design and Photography submission

June

4 th	AM	GCSE Maths Paper 2 – Calculator
6 th	AM	English Language Paper 2
	PM	Geography Paper 2 – Challenges in the human environment
9 th	AM	Triple Biology Paper 2 Combined Science – Paper 2F – Biology
11 th	AM	GCSE Maths Paper 3 – Calculator
11 th	PM	CONTINGENCY DAY
12 th	AM	Geography Paper 3 – Geographical Applications
13 th	AM	Triple Chemistry Paper 2 Combined Science – Paper 2F – Chemistry
16 th	AM	Triple Physics Paper 2 Combined Science – Paper 2F - Physics
25 th	All Day	CONTINGENCY DAY



Using the KS4 curriculum booklet with your Tutor, Parents or Carers you should be ready to submit your 2 Option Subjects & a Reserve



Your tutor will have given you an appointment time for a meeting in school with an independent careers advisor



Career Inspiration Day: Who Dunit! You will take part in a careers day activity.



Southlands School Term Dates 24 - 25

Southlands School

Term Dates 2024 - 2025



March 2025

Mo	Tu	We	Th	Fr	Sa	Su
					1	2
3	4	5	6	7	8	9
10	11	12	13	14	15	16
17	18	19	20	21	22	23
24	25	26	27	28	29	30
31						

April 2025

Mo	Tu	We	Th	Fr	Sa	Su
	1	2	3	4 *	5	6
7	8	9	10	11	12	13
14	15	16	17	18	19	20
21 #	22	23	24	25	26	27
28	29	30				

May 2025

Mo	Tu	We	Th	Fr	Sa	Su
			1	2 *	3	4
5 #	6	7	8	9	10	11
12	13	14	15	16	17	18
19	20	21	22	23 *	24	25
26	27	28	29	30	31	

June 2025

Mo	Tu	We	Th	Fr	Sa	Su
						1 #
2	3	4	5	6	7	8
9	10	11	12	13	14	15
16	17	18	19	20	21	22
23	24	25	26	27	28	29
30						

July 2025

Mo	Tu	We	Th	Fr	Sa	Su
	1	2	3	4	5	6
7	8	9	10	11	12	13
14	15	16	17	18 *	19	20
21	22	23	24	25	26	27
28	29	30	31			

August 2025

Mo	Tu	We	Th	Fr	Sa	Su
				1	2	3
4	5	6	7	8	9	10
11	12	13	14	15	16	17
18	19	20	21	22	23	24
25	26	27	28	29	30	31

	School Holidays
	Public Holidays
	Inset Days

#	38 Week Residential Evening Return
*	38 Week Residential Leave

Southlands School Term Dates 25 - 26

Southlands School

Term Dates 2025 - 2026



September 2025						
Mo	Tu	We	Th	Fr	Sa	Su
1	2	3 #	4	5	6	7
8	9	10	11	12	13	14
15	16	17	18	19	20	21
22	23	24	25	26	27	28
29	30					

October 2025						
Mo	Tu	We	Th	Fr	Sa	Su
		1	2	3	4	5
6	7	8	9	10	11	12
13	14	15	16	17	18	19
20	21	22	23 *	24	25	26
27	28	29	30	31		

November 2025						
Mo	Tu	We	Th	Fr	Sa	Su
					1	2 #
3	4	5	6	7	8	9
10	11	12	13	14	15	16
17	18	19	20	21	22	23
24	25	26	27	28	29	30

December 2025						
Mo	Tu	We	Th	Fr	Sa	Su
1	2	3	4	5	6	7
8	9	10	11	12	13	14
15	16	17	18	19 *	20	21
22	23	24	25	26	27	28
29	30	31				

January 2026						
Mo	Tu	We	Th	Fr	Sa	Su
			1	2	3	4 #
5	6	7	8	9	10	11
12	13	14	15	16	17	18
19	20	21	22	23	24	25
26	27	28	29	30	31	

February 2026						
Mo	Tu	We	Th	Fr	Sa	Su
						1
2	3	4	5	6	7	8
9	10	11	12	13 *	14	15
16	17	18	19	20	21	22
23 #	24	25	26	27	28	

March 2026						
Mo	Tu	We	Th	Fr	Sa	Su
						1
2	3	4	5	6	7	8
9	10	11	12	13	14	15
16	17	18	19	20	21	22
23	24	25	26	27 *	28	29
30	31					

April 2026						
Mo	Tu	We	Th	Fr	Sa	Su
		1	2	3	4	5
6	7	8	9	10	11	12 #
13	14	15	16	17	18	19
20	21	22	23	24	25	26
27	28	29	30			

May 2026						
Mo	Tu	We	Th	Fr	Sa	Su
				1 *	2	3
4 #	5	6	7	8	9	10
11	12	13	14	15	16	17
18	19	20	21	22 *	23	24
25	26	27	28	29	30	31 #

June 2026						
Mo	Tu	We	Th	Fr	Sa	Su
1	2	3	4	5	6	7
8	9	10	11	12	13	14
15	16	17	18	19	20	21
22	23	24	25	26	27	28
29	30					

July 2026						
Mo	Tu	We	Th	Fr	Sa	Su
		1	2	3	4	5
6	7	8	9	10	11	12
13	14	15	16	17	18	19
20 *	21	22	23	24	25	26
27	28	29	30	31		

August 2026						
Mo	Tu	We	Th	Fr	Sa	Su
					1	2
3	4	5	6	7	8	9
10	11	12	13	14	15	16
17	18	19	20	21	22	23
24	25	26	27	28	29	30
31						

	School Holidays
	Public Holidays
	Inset Days

#	38 Week Residential Evening Return
*	38 Week Residential Leave

EMBRACING AUTISM

Three days that focus on skills and strategies, for parents, carers and professionals supporting an autistic young person. Hampshire CAMHS Colleagues will be hosting these days alongside parents / carers with lived experience.

Supporting your autistic child to thrive - adapting to meet the needs of the autistic YP and practical strategies. Led by Dr Catherine Robson - Hampshire CAMHS.

Support for SEN in education & what to do if it's not working. Led by Gayle Moir, SENDIASS Services Manager. (not on 14 March)

Understanding autistic burnout, what it is, why it happens, why it's different to depression, recovery, safe spaces, and prevention. Led by Viv Dawes - Advocate/trainer/author.

9.30am - 3.30pm

Friday, 14 March, 2025

Proteus Creation Space,
Council Road, Basingstoke
RG21 3DH

Wednesday, 9 July, 2025

Waterlooville Community
Centre, 10 Maurepas Way,
Waterlooville, PO7 7AY

Friday, 14 November, 2025

St Peter Church Conference
Centre, Jewry Street,
Winchester, SO23 8RY



**For more information and to book a place go to
www.hampshirecamhs.nhs.uk/events/**

Tickets £20
Tea and coffee
included

Southlands Children's Home —Safeguarding Poster

Who can I report a concern to?



Jack Murphy
Registered Manager
01590 675350 / Ext 56345
Jack.Murphy2@cambianguroup.com



Lauren Stubley
Deputy Head of Care
01590 675350 / Ext 56364
Lauren.Stubley@cambianguroup.com

I can also report concerns to..



James Watson
Regional Care Lead

James.watson@cambianguroup.com



Alison Priddle
Principal & Responsible Individual
01590 675350 / Ext 56301 / 07711 765999
Alison.Priddle@cambianguroup.com

All safeguarding concerns to be reported within **1 hour**
Staff concerns ONLY to be reported to Registered Manager/Head of Care/
Principal/Regional Lead

Southlands School - (Education) Safeguarding Poster

Southlands Designated Safeguarding Leads



Holly Stevenson

Named Designated Safeguarding Lead

01590 675350 / Ext 56355

Holly.Stevenson@cambianguroup.com



Alison Priddle

Principal, Responsible Individual and DSL

01590 675350 / Ext 56301

Alison.Priddle@cambianguroup.com

Southlands Deputy Designated Safeguarding Leads



Jess Holloway

Co- Head of Education

01590675350/56328

Jess.Holloway@cambianguroup.com

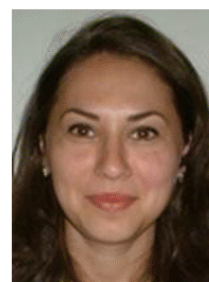


Holly Jeffery

DDSL / DBSL

01590 675350 / Ext 56355

Holly.Jeffery@cambianguroup.com



Sorina Ciorteanu

DDSL / DBSL

01590 675350 / Ext 56355

Sorina.Ciorteanu@cambianguroup.com

Regional Lead - James Watson / James.Watson@cambianguroup.com

All safeguarding concerns to be reported to D/DSL's within **1 hour**
Staff concerns ONLY to be reported to DSL/Principal/Regional Lead