



Southlands School

Newsletter

Week Commencing 31st March 2025

Phone: 01590 675 350 Duty Officer Phone: 07785 521 842

Contact us on: Southlands.Admin@cambianguroup.com

Facebook: www.facebook.com/cambianguroup

* Kindness * Respect * Resilience * Safety * Cherish *

Letter from SLT

Dear Parents and Carers,

Another sunny week, making us feel hopeful when planning our outdoor activities for next term. This opens up the world for our students instead of just indoor activities, now we can go to the water parks, visit gardens, Go-Karting and forest walks.

PEDALL

Primary will be attending PEDALL cycle inclusion on Fridays next term. PEDALL have a mixture of bicycles, catering for those than can and those that can't ride. You can see information for this here: [PEDALL inclusive cycling in the New Forest National Park](#)

Options

We would like to thank year 9 for submitting their option choices, we are now in the position to start timetabling for next year and we will let students know as soon as possible.

Easter Egg Hunt

The Easter Egg hunt organised by our two of our Year 11 students was a great success, with many participating and enjoying the chocolatey treats that were found in preparation for Easter.

Letter from SLT Continued

Mental Health Week

Mental Health week will be happening from the 12th – 18th May and we will be organising activities for the week for all of our students to engage with, we will send information nearer the time.

Staffing update

We are pleased to inform you that Naomi Arthur has taken on the role of Deputy Head of Education/SENDCo. Since January she has been a great support as part of our Senior Leadership Team, ensuring the needs of the students are identified, interventions and supports are implemented.

Hayley Mussell has returned from her maternity leave and we are pleased to welcome her back to work at Southlands. Holly Jeffrey has returned to her substantive role as part of the Safeguarding and Behaviour Support Team. We are grateful to Holly for the support she has provided for assessment processes and to our new families and students during their transition into Southlands.

We wish you all a glorious Easter break and look forward to seeing our residential students on the evening of Monday 21st April and our Day students on Tuesday 22nd April.

ASDAN Awards

What a great occasion on a beautiful sunny day, presenting RF and FF with their Personal Development - Bronze Awards. They have worked really hard and developed new skills as part of the course.



Go-Karting

Written by RF:

Tuesday, we went go-karting for our end of term trip. The track conditions were good and the karts at South Coast Karting were fast, with RF topping the times.



@ 11:39						
Result	Driver Name		Laps	Gap	Fastest Lap	Fastest On
1	RF	<input type="button" value="select"/>	19	--	42.342	19
2	Hadi Zarbafi	<input type="button" value="select"/>	18	2.176	44.518	15
3	JB	<input type="button" value="select"/>	15	4.141	46.483	13

Outdoor Learning – Primary 1 and 2

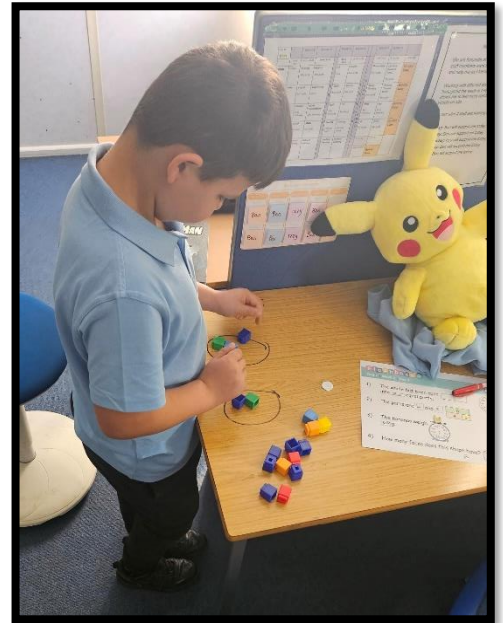
This week for outdoor learning, Primary 1 and 2 went to Wilverley Inclosure for a lovely walk in the fresh air. There were a lot of dens for the children to explore and the running races were so fast we struggled to catch them on camera!

We finished off our trip with an ice cream, as an end of term treat.



Primary 2

This week in Primary 2, we have been learning about fractions and how to represent them in a variety of ways. As a class, we determined that food would best reflect it!



We've also been studying Dogman during this term. We went to the movies to see this, then we worked hard to plan and develop our own graphic book using a website called storyboard! We had so much fun!

Flip Out – Lower Phase Group

This week Lower Phase Group were rewarded with a trip to Flip Out for completing their morning activities consistently well! They all had a fantastic time and demonstrated our school values!



ASDAN

This week, we had an exciting collaboration between the ASDAN and cookery classes to create a special cream tea experience for our dedicated kitchen and admin staff. The young people worked independently to make a variety of scones, carefully following the recipe, paying close attention to measurements, flavours, and ensuring uniformity. They successfully baked a selection of fruit, plain, and cheese scones that were delicious and well-made.



For the cream tea afternoon, the students took on the responsibility of serving the freshly baked scones and tea to the staff. They interacted with the staff in a warm

and friendly manner, engaging in pleasant conversations as everyone enjoyed their treats. This event not only showcased their cooking skills but also their ability to work together as a team, demonstrating kindness and appreciation for the hard work of others. It was a truly wonderful display of teamwork and thoughtfulness.



Well done to everyone involved – you all made your teachers and yourselves proud! Keep up the fantastic work!

Cookery

This week, we've been making Easter treats in class, and the young people have truly impressed with their skills. They've showcased exceptional abilities in weighing, portioning, and mixing, as well as managing their time effectively when setting different ingredients.



There have been plenty of opportunities to display their decorating skills, and I must say, a lot of willpower was shown when the mini eggs were out – some managed to make it to the end! Although, I can't say the same for the chocolate drops, which were a bit too irresistible! As always, the students have amazed me with their focus, safe behaviour, and consideration for others in the class. It's been a real pleasure teaching them during my first full term here at Southlands, and I'm looking forward to many more terms ahead.



I hope you all had a chance to enjoy a treat made by them this week. Wishing you all a wonderful Easter break!

Football

This week a lot of the students opted to join in the Astro-turf lunchtime football games instead of their usual activities due to the glorious Spring weather!

There was plenty of friendly competition all round from both sides.



Spy catcher & Codebreaking Careers Activity

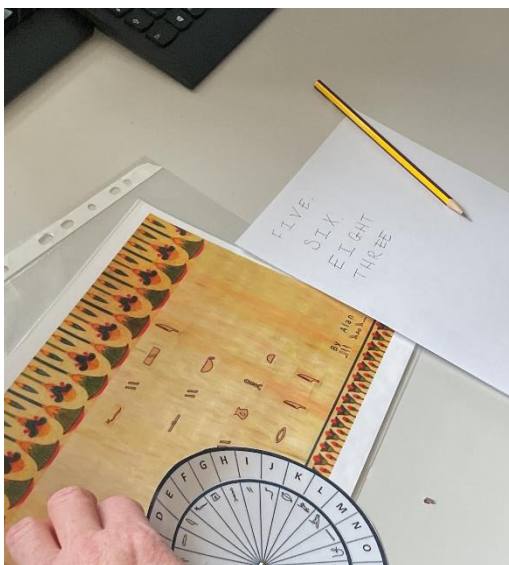


Year 8/9 students took part in an employability skills & team working event at school provided by EBP South.

Students discussed the skills & qualities that employers looked for. Ideas on how to identify these & work towards developing them were shared with everyone.

Students worked in small teams to crack codes that let them unlock padlocks to further clues.

Examples of incredible team work, leadership & lateral thinking were seen during the morning activity.



Upcoming Exams Timetable

May

12 th	AM	English Literature Paper 1 Maths FS Level 1 and 2 – Paper 1 – Non-Calculator Maths FS Level 1 and 2 – Paper 2 – Calculator
13 th	PM	Triple Biology Paper Combined Science - Paper 1F - Biology
14 th	AM	Geography Paper 1: Living with the physical environment
15 th	AM	GCSE Maths – Paper 1 – Non-Calculator
16 th	AM	English FS Level 1+2 Paper 1 – Reading
	PM	English FS Level 1+2 – Writing
19 th	AM	Triple Chemistry Paper 1 Combined Science – Paper 1F – Chemistry
20 th	AM	English Literature Paper 2
22 nd	AM	Triple Physics Paper 1 Combined Science – Paper 1F – Physics
23 rd	AM	English Language Paper 1
31 st		GCSE Art and Design and Photography submission

June

4 th	AM	GCSE Maths Paper 2 – Calculator
6 th	AM	English Language Paper 2
	PM	Geography Paper 2 – Challenges in the human environment
9 th	AM	Triple Biology Paper 2 Combined Science – Paper 2F – Biology
11 th	AM	GCSE Maths Paper 3 – Calculator
11 th	PM	CONTINGENCY DAY
12 th	AM	Geography Paper 3 – Geographical Applications
13 th	AM	Triple Chemistry Paper 2 Combined Science – Paper 2F – Chemistry
16 th	AM	Triple Physics Paper 2 Combined Science – Paper 2F - Physics
25 th	All Day	CONTINGENCY DAY



Using the KS4 curriculum booklet with your Tutor, Parents or Carers you should be ready to submit your 2 Option Subjects & a Reserve



Your tutor will have given you an appointment time for a meeting in school with an independent careers advisor



Career Inspiration Day: Who Dunit! You will take part in a careers day activity.



Southlands School Term Dates 24 - 25

Southlands School

Term Dates 2024 - 2025



March 2025

Mo	Tu	We	Th	Fr	Sa	Su
					1	2
3	4	5	6	7	8	9
10	11	12	13	14	15	16
17	18	19	20	21	22	23
24	25	26	27	28	29	30
31						

April 2025

Mo	Tu	We	Th	Fr	Sa	Su
	1	2	3	4 *	5	6
7	8	9	10	11	12	13
14	15	16	17	18	19	20
21 #	22	23	24	25	26	27
28	29	30				

May 2025

Mo	Tu	We	Th	Fr	Sa	Su
			1	2 *	3	4
5 #	6	7	8	9	10	11
12	13	14	15	16	17	18
19	20	21	22	23 *	24	25
26	27	28	29	30	31	

June 2025

Mo	Tu	We	Th	Fr	Sa	Su
						1 #
2	3	4	5	6	7	8
9	10	11	12	13	14	15
16	17	18	19	20	21	22
23	24	25	26	27	28	29
30						

July 2025

Mo	Tu	We	Th	Fr	Sa	Su
	1	2	3	4	5	6
7	8	9	10	11	12	13
14	15	16	17	18 *	19	20
21	22	23	24	25	26	27
28	29	30	31			

August 2025

Mo	Tu	We	Th	Fr	Sa	Su
				1	2	3
4	5	6	7	8	9	10
11	12	13	14	15	16	17
18	19	20	21	22	23	24
25	26	27	28	29	30	31

	School Holidays
	Public Holidays
	Inset Days

#	38 Week Residential Evening Return
*	38 Week Residential Leave

Southlands School Term Dates 25 - 26

Southlands School

Term Dates 2025 - 2026



September 2025						
Mo	Tu	We	Th	Fr	Sa	Su
1	2	3 #	4	5	6	7
8	9	10	11	12	13	14
15	16	17	18	19	20	21
22	23	24	25	26	27	28
29	30					

October 2025						
Mo	Tu	We	Th	Fr	Sa	Su
		1	2	3	4	5
6	7	8	9	10	11	12
13	14	15	16	17	18	19
20	21	22	23 *	24	25	26
27	28	29	30	31		

November 2025						
Mo	Tu	We	Th	Fr	Sa	Su
					1	2 #
3	4	5	6	7	8	9
10	11	12	13	14	15	16
17	18	19	20	21	22	23
24	25	26	27	28	29	30

December 2025						
Mo	Tu	We	Th	Fr	Sa	Su
1	2	3	4	5	6	7
8	9	10	11	12	13	14
15	16	17	18	19 *	20	21
22	23	24	25	26	27	28
29	30	31				

January 2026						
Mo	Tu	We	Th	Fr	Sa	Su
			1	2	3	4 #
5	6	7	8	9	10	11
12	13	14	15	16	17	18
19	20	21	22	23	24	25
26	27	28	29	30	31	

February 2026						
Mo	Tu	We	Th	Fr	Sa	Su
						1
2	3	4	5	6	7	8
9	10	11	12	13 *	14	15
16	17	18	19	20	21	22
23 #	24	25	26	27	28	

March 2026						
Mo	Tu	We	Th	Fr	Sa	Su
						1
2	3	4	5	6	7	8
9	10	11	12	13	14	15
16	17	18	19	20	21	22
23	24	25	26	27 *	28	29
30	31					

April 2026						
Mo	Tu	We	Th	Fr	Sa	Su
		1	2	3	4	5
6	7	8	9	10	11	12 #
13	14	15	16	17	18	19
20	21	22	23	24	25	26
27	28	29	30			

May 2026						
Mo	Tu	We	Th	Fr	Sa	Su
				1 *	2	3
4 #	5	6	7	8	9	10
11	12	13	14	15	16	17
18	19	20	21	22 *	23	24
25	26	27	28	29	30	31 #

June 2026						
Mo	Tu	We	Th	Fr	Sa	Su
1	2	3	4	5	6	7
8	9	10	11	12	13	14
15	16	17	18	19	20	21
22	23	24	25	26	27	28
29	30					

July 2026						
Mo	Tu	We	Th	Fr	Sa	Su
		1	2	3	4	5
6	7	8	9	10	11	12
13	14	15	16	17	18	19
20 *	21	22	23	24	25	26
27	28	29	30	31		

August 2026						
Mo	Tu	We	Th	Fr	Sa	Su
					1	2
3	4	5	6	7	8	9
10	11	12	13	14	15	16
17	18	19	20	21	22	23
24	25	26	27	28	29	30
31						

	School Holidays
	Public Holidays
	Inset Days

#	38 Week Residential Evening Return
*	38 Week Residential Leave

EMBRACING AUTISM

Three days that focus on skills and strategies, for parents, carers and professionals supporting an autistic young person. Hampshire CAMHS Colleagues will be hosting these days alongside parents / carers with lived experience.

Supporting your autistic child to thrive - adapting to meet the needs of the autistic YP and practical strategies. Led by Dr Catherine Robson - Hampshire CAMHS.

Support for SEN in education & what to do if it's not working. Led by Gayle Moir, SENDIASS Services Manager. (not on 14 March)

Understanding autistic burnout, what it is, why it happens, why it's different to depression, recovery, safe spaces, and prevention. Led by Viv Dawes - Advocate/trainer/author.

9.30am - 3.30pm

Friday, 14 March, 2025

Proteus Creation Space,
Council Road, Basingstoke
RG21 3DH

Wednesday, 9 July, 2025

Waterlooville Community
Centre, 10 Maurepas Way,
Waterlooville, PO7 7AY

Friday, 14 November, 2025

St Peter Church Conference
Centre, Jewry Street,
Winchester, SO23 8RY



**For more information and to book a place go to
www.hampshirecamhs.nhs.uk/events/**

Tickets £20
Tea and coffee
included

Southlands Children's Home —Safeguarding Poster

Who can I report a concern to?



Jack Murphy
Registered Manager
01590 675350 / Ext 56345
Jack.Murphy2@cambianguroup.com



Lauren Stubley
Deputy Head of Care
01590 675350 / Ext 56364
Lauren.Stubley@cambianguroup.com

I can also report concerns to..



James Watson
Regional Care Lead

James.watson@cambianguroup.com



Alison Priddle
Principal & Responsible Individual
01590 675350 / Ext 56301 / 07711 765999
Alison.Priddle@cambianguroup.com

All safeguarding concerns to be reported within **1 hour**
Staff concerns ONLY to be reported to Registered Manager/Head of Care/
Principal/Regional Lead

Southlands School - (Education) Safeguarding Poster

Southlands Designated Safeguarding Leads



Holly Stevenson

Named Designated Safeguarding Lead

01590 675350 / Ext 56355

Holly.Stevenson@cambianguroup.com



Alison Priddle

Principal, Responsible Individual and DSL

01590 675350 / Ext 56301

Alison.Priddle@cambianguroup.com

Southlands Deputy Designated Safeguarding Leads



Jess Holloway

Co- Head of Education

01590675350/56328

Jess.Holloway@cambianguroup.com

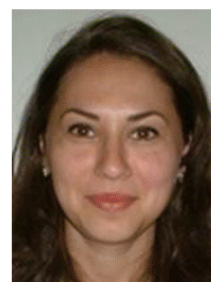


Holly Jeffery

DDSL / DBSL

01590 675350 / Ext 56355

Holly.Jeffery@cambianguroup.com



Sorina Ciorteanu

DDSL / DBSL

01590 675350 / Ext 56355

Sorina.Ciorteanu@cambianguroup.com

Regional Lead - James Watson / James.Watson@cambianguroup.com

All safeguarding concerns to be reported to D/DSL's within **1 hour**
Staff concerns ONLY to be reported to DSL/Principal/Regional Lead