



Southlands School

Newsletter

Week Commencing 28th April 2025

Phone: 01590 675 350 Duty Officer Phone: 07785 521 842

Contact us on: Southlands.Admin@cambianguroup.com

Facebook: www.facebook.com/cambianguroup

* Kindness * Respect * Resilience * Safety * Cherish *

Letter from SLT

Dear Parents and Carers,

As we move into the final stretch of the academic year, we're thrilled to share some of the exciting things that have been happening at school recently. The sunny weather has brought with it a wonderful sense of energy and enthusiasm, and our students have been thoroughly enjoying the chance to take their learning outside whenever possible.

Outdoor Learning

Outdoor learning has been a key focus over the past week, and our staff have embraced the opportunity to deliver creative, hands-on lessons in the fresh air. From experiments in the garden to nature walks supporting our sensory learning programmes, being outside has truly enhanced the learning experience for our young people.

Marwell Zoo

One of the standout moments this week was our trip to Marwell Zoo, where students had a chance to get up close with some incredible animals. It was a fantastic day of exploration, discovery, and fun. The trip supported our curriculum themes beautifully, sparking thoughtful discussions back in the classroom and inspiring some wonderful follow-up work.

Letter from SLT Continued

English

In English, we've been tapping into our students' creativity through performance poetry. Inspired by *The Cat in the Hat*, pupils have been working hard to write, rehearse, and perform their own imaginative poems. It's been a joy to see their confidence grow as they bring language to life through rhythm, rhyme, and a bit of theatrical flair!

Exam Season

As we approach the exam season, we'd like to acknowledge the hard work of our students and staff in preparing for this important time. With only one week to go, final arrangements are well underway. This week saw the start of the art exams, with students already producing some fantastic pieces. The full exam schedule begins on Monday, 12th May, and we know our young people will continue to give their very best.

Warm Weather

With the warmer days continuing, we kindly remind families to help students stay safe in the sun: please ensure your child comes to school with a sun hat, wears sunscreen, and brings a water bottle. Staying hydrated and protected is essential as we enjoy more time outdoors. All tutors have sun cream available for the students to top up during the day.

Pick up and Drop Off

Please note, in order to ensure safety for all, if you wish to have a handover in relation to your child please be reminded to park up by the back exit gates.

Mental Health Awareness Week

Looking ahead, we're proud to be taking part in Mental Health Awareness Week, which also starts on 12th May. We recognise the importance of supporting our students' emotional wellbeing as much as their academic development. Tutors will be sharing a timetable of activities designed to promote positive mental health, mindfulness, and connection throughout the week. These activities will be varied and accessible, aiming to support every learner in a way that suits them best.

Letter of Congratulations

We are pleased to share that we have received a letter from the Rt Hon Sir Julian Lewis our local MP congratulating us all on our positive Ofsted outcome. Please do see the copy of the letter below

Thank you, as always, for your continued support and encouragement. It's a pleasure to share our children's successes with you,



HOUSE OF COMMONS

LONDON SW1A 0AA

Mrs Alison Priddle
Headteacher
Southlands School
Vicars Hill, Boldre
Nr Lymington
Hampshire SO41 5UA

22 April 2025

Dear Mrs Priddle,

I was very pleased to read in the 'Advertiser and Times' that the school has achieved such an excellent OFSTED report and write to congratulate you and all involved in securing this.

It reflects great credit on you, your staff, Governors, parents and, of course, the pupils themselves that this recognition has been given.

Southlands School is a very valuable part of our community and I am sure it will continue to go from strength to strength.

*It really is a glowing report!
Well done!*

Julian Lewis

Cookery

This week, the primary children have been busy in the kitchen making homemade hummus and pitta chips. They worked hard to follow the recipe, practising their chopping, blending, and safe food-handling skills. It was wonderful to see their enthusiasm and growing confidence as they created a healthy, delicious snack from scratch.



In addition to cooking, the children also planted cress seeds as part of our ongoing food education. Over the coming days, they'll be responsible for watering and looking after their seeds as they grow. This activity is in preparation for an upcoming lesson where we'll be using the homegrown cress to make egg and cress rolls. I'm really looking forward to seeing how well the cress grows—and so are the children! Stay tuned for the end results.

Primary 2

This week in Maths, Primary 2 have been working out fractions of amounts. We have used multilinks to show how we can divide into equal groupings to find fractions of amounts. Some of the class, have used their knowledge of the times table to work out groupings and have been able to apply this to answer questions such as 'You have 48 sweets. You choose can choose between having a) $\frac{4}{6}$ or b) $\frac{5}{8}$ of the total amount of sweets. Which would you choose and why?



Primary 1 & 2 - PEDALL



Primary 1 and 2 have been welcomed back to PEDALL this half term, we headed over in the glorious sunshine for a bike ride through Burley.

PEDALL provide guided rides for people of all aged with a range of different needs and abilities. Fun was had by all and we all look forward to going back next week!

PEDALL also do events throughout the weekends and school holidays- you can find out more at www.pedall.org.uk

Wellbeing



Louise Reid, our Southlands School Occupational Therapist, was working with TS on Wednesday. Together they were exploring the wonderful Sensory Foam. 'Senso Foam' tingles on the skin, smells like blueberries and has colour.

Louise and TS decided it would be fun to spray the foam at staff and ended up splatting Tom in the face with lots of it.

TS found the moment very funny! Tom possibly not so much.

SOUTHLANDS SCHOOL

COLOUR RUN

We would like to invite you to our
Charity colour run to raise money for
MacMillan

Date: 22/05/2025 @ 14:00

All of the young people who would like
to take part need a white t-shirt and a
charity donation

We would like to invite all parents to
watch and there will be Drinks and
snacks available.

There will be ice creams for the young
people



Upper Phase Group

Upper Phase Group have been making use of the sunshine – completing some tie-dye and also starting to clean up outside the cookery room.



Southlands School Term Dates 24 - 25

Southlands School

Term Dates 2024 - 2025



March 2025

Mo	Tu	We	Th	Fr	Sa	Su
					1	2
3	4	5	6	7	8	9
10	11	12	13	14	15	16
17	18	19	20	21	22	23
24	25	26	27	28	29	30
31						

April 2025

Mo	Tu	We	Th	Fr	Sa	Su
	1	2	3	4 *	5	6
7	8	9	10	11	12	13
14	15	16	17	18	19	20
21 #	22	23	24	25	26	27
28	29	30				

May 2025

Mo	Tu	We	Th	Fr	Sa	Su
			1	2 *	3	4
5 #	6	7	8	9	10	11
12	13	14	15	16	17	18
19	20	21	22	23 *	24	25
26	27	28	29	30	31	

June 2025

Mo	Tu	We	Th	Fr	Sa	Su
						1 #
2	3	4	5	6	7	8
9	10	11	12	13	14	15
16	17	18	19	20	21	22
23	24	25	26	27	28	29
30						

July 2025

Mo	Tu	We	Th	Fr	Sa	Su
	1	2	3	4	5	6
7	8	9	10	11	12	13
14	15	16	17	18 *	19	20
21	22	23	24	25	26	27
28	29	30	31			

August 2025

Mo	Tu	We	Th	Fr	Sa	Su
				1	2	3
4	5	6	7	8	9	10
11	12	13	14	15	16	17
18	19	20	21	22	23	24
25	26	27	28	29	30	31

	School Holidays
	Public Holidays
	Inset Days

#	38 Week Residential Evening Return
*	38 Week Residential Leave

Southlands School Term Dates 25 - 26

Southlands School

Term Dates 2025 - 2026



September 2025						
Mo	Tu	We	Th	Fr	Sa	Su
1	2	3 #	4	5	6	7
8	9	10	11	12	13	14
15	16	17	18	19	20	21
22	23	24	25	26	27	28
29	30					

October 2025						
Mo	Tu	We	Th	Fr	Sa	Su
		1	2	3	4	5
6	7	8	9	10	11	12
13	14	15	16	17	18	19
20	21	22	23 *	24	25	26
27	28	29	30	31		

November 2025						
Mo	Tu	We	Th	Fr	Sa	Su
					1	2 #
3	4	5	6	7	8	9
10	11	12	13	14	15	16
17	18	19	20	21	22	23
24	25	26	27	28	29	30

December 2025						
Mo	Tu	We	Th	Fr	Sa	Su
1	2	3	4	5	6	7
8	9	10	11	12	13	14
15	16	17	18	19 *	20	21
22	23	24	25	26	27	28
29	30	31				

January 2026						
Mo	Tu	We	Th	Fr	Sa	Su
			1	2	3	4 #
5	6	7	8	9	10	11
12	13	14	15	16	17	18
19	20	21	22	23	24	25
26	27	28	29	30	31	

February 2026						
Mo	Tu	We	Th	Fr	Sa	Su
						1
2	3	4	5	6	7	8
9	10	11	12	13 *	14	15
16	17	18	19	20	21	22
23 #	24	25	26	27	28	

March 2026						
Mo	Tu	We	Th	Fr	Sa	Su
						1
2	3	4	5	6	7	8
9	10	11	12	13	14	15
16	17	18	19	20	21	22
23	24	25	26	27 *	28	29
30	31					

April 2026						
Mo	Tu	We	Th	Fr	Sa	Su
		1	2	3	4	5
6	7	8	9	10	11	12 #
13	14	15	16	17	18	19
20	21	22	23	24	25	26
27	28	29	30			

May 2026						
Mo	Tu	We	Th	Fr	Sa	Su
				1 *	2	3
4 #	5	6	7	8	9	10
11	12	13	14	15	16	17
18	19	20	21	22 *	23	24
25	26	27	28	29	30	31 #

June 2026						
Mo	Tu	We	Th	Fr	Sa	Su
1	2	3	4	5	6	7
8	9	10	11	12	13	14
15	16	17	18	19	20	21
22	23	24	25	26	27	28
29	30					

July 2026						
Mo	Tu	We	Th	Fr	Sa	Su
		1	2	3	4	5
6	7	8	9	10	11	12
13	14	15	16	17	18	19
20 *	21	22	23	24	25	26
27	28	29	30	31		

August 2026						
Mo	Tu	We	Th	Fr	Sa	Su
					1	2
3	4	5	6	7	8	9
10	11	12	13	14	15	16
17	18	19	20	21	22	23
24	25	26	27	28	29	30
31						

	School Holidays
	Public Holidays
	Inset Days

#	38 Week Residential Evening Return
*	38 Week Residential Leave

Upcoming Exams Timetable

May

12 th	AM	English Literature Paper 1 Maths FS Level 1 and 2 – Paper 1 – Non-Calculator Maths FS Level 1 and 2 – Paper 2 – Calculator
13 th	PM	Triple Biology Paper Combined Science - Paper 1F - Biology
14 th	AM	Geography Paper 1: Living with the physical environment
15 th	AM	GCSE Maths – Paper 1 – Non-Calculator
16 th	AM	English FS Level 1+2 Paper 1 – Reading
	PM	English FS Level 1+2 – Writing
19 th	AM	Triple Chemistry Paper 1 Combined Science – Paper 1F – Chemistry
20 th	AM	English Literature Paper 2
22 nd	AM	Triple Physics Paper 1 Combined Science – Paper 1F – Physics
23 rd	AM	English Language Paper 1
31 st		GCSE Art and Design and Photography submission

June

4 th	AM	GCSE Maths Paper 2 – Calculator
6 th	AM	English Language Paper 2
	PM	Geography Paper 2 – Challenges in the human environment
9 th	AM	Triple Biology Paper 2 Combined Science – Paper 2F – Biology
11 th	AM	GCSE Maths Paper 3 – Calculator
11 th	PM	CONTINGENCY DAY
12 th	AM	Geography Paper 3 – Geographical Applications
13 th	AM	Triple Chemistry Paper 2 Combined Science – Paper 2F – Chemistry
16 th	AM	Triple Physics Paper 2 Combined Science – Paper 2F - Physics
25 th	All Day	CONTINGENCY DAY

Southlands Children's Home —Safeguarding Poster

Who can I report a concern to?



Jack Murphy
Registered Manager
01590 675350 / Ext 56345
Jack.Murphy2@cambianguroup.com



Lauren Stubley
Deputy Head of Care
01590 675350 / Ext 56364
Lauren.Stubley@cambianguroup.com

I can also report concerns to..



James Watson
Regional Care Lead

James.watson@cambianguroup.com



Alison Priddle
Principal & Responsible Individual
01590 675350 / Ext 56301 / 07711 765999
Alison.Priddle@cambianguroup.com

All safeguarding concerns to be reported within **1 hour**
Staff concerns ONLY to be reported to Registered Manager/Head of Care/
Principal/Regional Lead

Southlands School - (Education) Safeguarding Poster

Southlands Designated Safeguarding Leads



Holly Stevenson

Named Designated Safeguarding Lead

01590 675350 / Ext 56355

Holly.Stevenson@cambianguroup.com



Alison Priddle

Principal, Responsible Individual and DSL

01590 675350 / Ext 56301

Alison.Priddle@cambianguroup.com

Southlands Deputy Designated Safeguarding Leads



Jess Holloway

Co- Head of Education

01590675350/56328

Jess.Holloway@cambianguroup.com

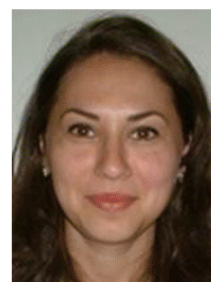


Holly Jeffery

DDSL / DBSL

01590 675350 / Ext 56355

Holly.Jeffery@cambianguroup.com



Sorina Ciorteanu

DDSL / DBSL

01590 675350 / Ext 56355

Sorina.Ciorteanu@cambianguroup.com

Regional Lead - James Watson / James.Watson@cambianguroup.com

All safeguarding concerns to be reported to D/DSL's within **1 hour**
Staff concerns ONLY to be reported to DSL/Principal/Regional Lead