

Cambian Group
Cambian Asperger Syndrome Services Limited

Statement of Purpose

Grateley House School

Pond Lane, Grateley, Andover, Hampshire SP11 8TA

Tel: 01264 889751

DfE Registration Number: 850-6058

Ofsted Registration Number: 116588/SC012450



STATEMENT OF PRINCIPLES AND PRACTICE

The Statement of Purpose is available to parents and staff. It is also made known to the students through a range of methods as appropriate. This statement describes the overall purpose of the school and describes any theoretical or therapeutic model underpinning the practice of the school.

Grateley House School is part of the Cambian Group. All young people in the school have an Education Health Care Plan (EHCP). All have a diagnosis of an Autistic Spectrum Condition (ASC) usually High Functioning Autism. Other associated difficulties such as ADHD, dyslexia, dyspraxia and secondary mental health conditions such as anxiety and depression and its associated behaviours can also be accommodated, when such difficulties occur as part of an Autistic Spectrum Condition (ASC), but not in place of it.

Our work is based upon understanding the ability of each young person to manage academically, socially and emotionally as individuals, as part of a group, as part of their family and as part of the wider community. The purpose of the residential homes in the school is to prepare young people for the demands of adult life. Staff expertise and specialist approaches, including a nurturing therapeutic environment, enable young people to flourish academically, socially, emotionally and spiritually.

An Autistic Spectrum Condition can be likened to an iceberg, where nine-tenths of it lies beneath the surface. The true extent of the disorder is hidden as young people may look and sound as if there are no apparent issues. This can arouse false expectations and can lead others into assumptions about their capabilities, behaviour and responses. These judgements have been known to limit what can be accomplished by our young people.

Grateley House School is a community that engages students and develops positive attitudes to learning. Staff are confident and skilled in building positive relationships that help to break down barriers, build self-esteem and challenge disaffection.

For vulnerable young people it is often a long road to success. Through the provision of a structured learning environment, we build that success through challenge, personalisation and innovation. Our aim, for all students, is for them to lead a full and fulfilling independent life in which they are equipped to make a positive contribution to their community. We help our students develop the skills that enable them to increase their independence and manage their own behaviour.

All Grateley House School staff are committed to enabling all students to overcome their challenges and achieve their full potential through both their social development and their academic learning. Staff have clear expectations about the standards they expect and encourage all students to aspire to within an environment of small groups with specialist teachers and teaching assistants to promote learning.

PROMOTING POSITIVE BEHAVIOUR AND RELATIONSHIPS

Our approach is based upon a non-aversive positive approach to behaviour change, an ASC-friendly range of styles and strategies that are needs-led and detailed within personalised care plans. The work of our staff is based upon understanding the ability of the student to manage academically, socially and emotionally. We use therapeutic support and facilitate an educational, social, emotional, and spiritual ethos, which take account of an ASC learning style. Individualised plans are designed to meet specific needs, and these plans form the basis of a partnership between the student, school, family and social worker if applicable.

Challenging behaviour at Grateley House School can take many forms. All staff are fully trained in the management of challenging behaviour, which is based on a positive approach. Punishment is not seen as appropriate; there is a focus on learning from natural consequences and there is an expectation that students accept responsibility for their behaviours in the interests of natural justice and their own personal development. Apologies, kind acts and restitution for damage, catch-up, community service, and in some cases, grounding to site for a defined period, are seen as appropriate consequences for developing future independence.

We aim to teach self-management through the provision of a range of strategies that allows the students to utilise their strengths and manage their difficulties successfully. We aim to help students reduce and control their socially unacceptable, inappropriate impulses and behaviours through the structured use of positive interventions and rewards, behaviour planning and the teaching of alternative behaviours. Each student has a combined Individual Behaviour Support Plan & Individual Risk Assessments. These documents are formally reviewed on a termly monthly basis; with input from therapy, care and education. Should there be any change in a student's presentation they will be reviewed more frequently as they are a 'live' document.

Physical Intervention Training

Physical interventions are rare. However, staff are well trained to support behaviour and keep children safe. Grateley House School uses the Crisis Prevention Institute to deliver physical intervention training. Our staff teams receive regular training and refresher sessions in CPI Safety Intervention Training; we strive wherever possible to minimize the need for direct physical intervention and it is only used as a last resort. However, if our staff have to use a physical intervention we have in place a detailed recording and monitoring system to ensure that this is appropriately documented according to the NMS Standard 20. Such records are reviewed by members of the Senior Leadership Team and the whole process is monitored by them. All physical interventions are reviewed within twenty-four hours and staff involved in a physical intervention receive a specific CPI Debrief with the instructor on top of all normal behaviour management and post incident debrief procedures to add an additional level of quality assurance.

Grateley House School benefits from a qualified CPI instructor who is available on site in a full-time capacity. The Head of Care is the qualified CPI instructor and having this resource available on site enables staff to access targeted advice regarding incidents as they occur or through the debrief process. Annual refresher sessions are organised for all appropriate staff and these include a written and practical assessment.

RESIDENTIAL ACCOMMODATION

Grateley House School is registered as a 38-week, Residential Special School for mixed gender students who are 11 to 19 years of age. The school has 41 residential places.

There are seven living groups based on the main school site that provide a caring and nurturing environment as close to a family situation as possible. These living groups aim to recognise the developmental needs of each individual student within the group. All the residential accommodation has single occupancy bedrooms and some have en-suite facilities. Each living group benefits from communal lounges, bathrooms and kitchen areas. There are three houses within the main school building (all of which are closed), with the remaining four houses situated within the school grounds, providing the opportunity for a more nurturing environment for those who require this, as they provide their own gardens, swings and play equipment.

Grateley House School also has Stratford Lodge, which is an adult care home situated in Salisbury. This is a 52-week CQC registered Care home that can accommodate up to 6 adults with Autism, Severe Learning Difficulties and other associated conditions.

Students have input into the décor of their homes and bedrooms through weekly house meetings.

Students are encouraged to take responsibility for tidiness around the house and in their own rooms. Students have single study bedrooms and are encouraged to bring pictures, books and any other special personal items. Students can watch television in their free time in the lounges, which offer a selection of Free view digital channels. A large range of age appropriate resources are available in each living area for students to use and we actively encourage reading. Access to WIFI is available to students on a limited basis, outside of the school day.

Decisions are made regarding which house accommodates young people depending on their age, ability, presenting difficulties and potentially their changing needs and compatibility with other students. The young people are also consulted on the matter whenever it is appropriate or there is availability to do so.

A description of the location of Grateley House School

Grateley House School is a large country house set in extensive grounds with additional education and residential premises within the eight-acre site. There is a wooded area and a multi-use games area for sporting and recreational activities. We also have a play equipment, woodland and outdoor shelter in the grounds of the school.

The arrangements for supporting the cultural, linguistic and religious needs of children

We recognise and respect our students' religious beliefs, customs, rituals and culture. We allow and support them to practice their religion either in school or during the evenings and weekends at local places of worship. We actively encourage links with the wider community to support our students to feel that they belong to whichever community or culture they are from.

The school as a whole is non-denominational and the school assemblies offer students a time to celebrate their achievements with a weekly celebration assembly and an annual end of year celebration day that parents are invited to attend. Students have the opportunity to learn about different religions through personal development days such as Cultural Festival Day.

COMPLAINTS

Grateley House School is committed to providing the highest quality service for young people, parents, local authorities, social service and health authorities. The Complaints Procedure offers additional security for students attending our establishment and peace of mind for their parents and placing authorities. This includes the involvement of persons who are completely independent of the establishment who can investigate formal complaints made by the student or persons acting on their behalf. Each student is allocated a key worker whom they meet with regularly and there is a child-friendly version of the complaint's procedure designed to make it accessible to all our individuals. The school provides a range of communication methods to enable them to express their views and raise concerns or complaints.

We believe that students have the right to comment upon the service provided for them, to be involved in decisions relating to that service and to make complaints where they consider the service is unsatisfactory, for whatever reason. How to complain is also available within the Students' Guide. Our aim is to be able to deal with any complaints in an informal manner initially, to seek a swift resolution. In the event that this is not possible and the complainant wishes to take a more formal route, we ensure that this is acknowledged, investigated and addressed within our complaints policy and procedures. The school is also visited regularly by an Independent Advocate from NYAS, who will speak with the students individually on request.

All complaints are recorded electronically on the school's MIS system, and reviewed by the Senior Leadership Team on a weekly basis and through the Regulation 20 monitoring procedure. Complaints can also be made directly to Ofsted and whistleblowing hotline

Ofsted National Business Unit
Piccadilly Gate
Store Street
Manchester M1 2WD
Tel: 0300 1231232

Email: enquiries@ofsted.gov.uk

Metropolitan House
3 Darkes Lane
Potters Bar
Hertfordshire
EN6 1AG
Tel: 0208 7356150

Details of how a person, body or organisation involved in the care or protection of a child can access the school's child protection policies or the behavior management policy.

We have specific Safeguarding Children and Behaviour Management policies as outlined in standards 13 & 20 of Residential Special Schools NMS. All staff are provided with copies of these policies. Other parties such as parents, local authorities and social services are supplied with copies upon request. Copies are kept on the school website:

[Reports & Policies | Grateley House School | Cambian Education \(cambianguroup.com\)](#)

SECURING STUDENTS VIEWS

We support our young people to 'have a voice' and to enable them to express ideas and concerns using whichever means are most appropriate to them. All young people are assigned a key worker, who will meet regularly to chat, support and address any needs or concerns. All residential houses have meetings for the students with an agenda and minutes. There is a Student Council that meets on a half termly basis which covers areas such as anti-bullying, food and health and wellbeing. Minutes from these meetings are shared with students and staff across the school and suggestions are discussed at senior leadership level and actioned where appropriate. There are consultative processes throughout the year on various issues as part of the self-evaluation audits of the school. Students are given the opportunity to meet with the governors on a termly basis as part of the Governance Board Meeting. On occasions, students are also invited to the Senior Leadership meetings, to be consulted for their views. An open communication environment is encouraged whereby students are communicated with in a way that best suits their level of understanding and expression. Due to the communication challenges our young people experience by the nature of their diagnoses, the onsite Speech and Language Therapist supports staff to adapt their communication to ensure young people are able to communicate their thoughts and feelings effectively in an appropriate format e.g. written, visual and verbal. The Speech and Language Therapist also facilitates the adaption of materials to gain feedback such as simplifying the language used or creating visual formats.

A description of the school's policy and approach in relation to:

- (a) Anti-discriminatory practice in respect of children and their families; and
- (b) Children's rights.

We believe that students with additional needs should share the same rights as all members of society, where these are appropriate and in their best interests.

Within the statutory framework provided by current legislation and regulations, staff of Grateley House School work to protect and promote, for all people with special needs the right to:

- Live full and independent lives to the maximum of their potential
- A full, accurate and unbiased assessment of their special needs
- A range of education, care, health and other associated support services required to meet all their needs
- Be involved in decisions affecting their lives and to have their wishes, as far as possible, ascertained and respected
- Appropriate guidance, counselling and care which promote their physical, mental and spiritual health and well-being
- Adequate food, clothing, space and other necessities of life
- The equipment, assistance and support services needed to enable them to live with dignity
- Participate in and benefit from cultural, entertainment, recreational and sporting activities
- Use facilities and services in the community where possible
- Develop relationships without exploitation or coercion
- The full protection of the law
- Be protected from all forms of abuse and from the fear or threat of abuse
- Access information contained in their personal records, where this does not conflict with statutory regulations or threatens their well-being
- Supportive intervention to promote positive behaviour and to protect them from harm
- Access suitably qualified, experienced and sympathetic staff in sufficient numbers to maintain quality of service
- Have links with home and family promoted and maintained
- Positive recognition of cultural and religious diversity

EDUCATION

Details of the provision to support children with special educational needs

The school offers a range of classroom facilities. Each class generally has up to six students working with a teacher who is supported by one or more teaching assistants. Class groups are arranged in year groups, and different abilities are catered for through differentiation. Education, Health and Care plan outcomes are embedded in the curriculum, and students receive support to make progress towards these. The Therapy Team work closely with staff and students in education and within the house environments. They support the students' individual needs through both direct and indirect work, with the implementation of programmes that are integrated into the waking day curriculum.

Links are also made with other education providers and organisations to ensure the broadest range of educational opportunities and activities are available to students. Additional lessons are available for those who wish to extend their learning, as are sports-based learning activities for those who enjoy a more practical route.

The school follows a waking day curriculum and this allows for programmes to be planned for and delivered across both the education and care settings which in turn provide a consistent approach for all students.

Curriculum Design and Structure

We believe our students have the right to experience the breadth and range of subjects delivered within a specialised and adapted National Curriculum. Progress is carefully monitored to ensure that outstanding progress can be made. Grateley House School offers specialist facilities for all subjects and some traditionally based practical rooms. All classrooms have computer facilities including interactive whiteboards and Internet access. Food Technology/cookery and home management skills are also offered where appropriate in residential settings as curriculum enhancements.

A full range of external qualifications and accreditation is offered including GCSEs, Entry level, Functional Skills and vocational courses. There is a menu of intervention programmes through which personal and social development are tailored to support students in developing their skills.

Alongside generic classrooms, students have access to the following specialised learning facilities:

- Art and crafts Classroom
- Science Lab
- Design and Technology workshop and classroom
- Food Technology/Living Skills Kitchen
- Outdoor fitness facilities (Multi-use games area)
- OT room equipped for holistic therapy treatments
- ICT Suite
- Library
- Fully maintained grounds with outdoor play equipment and a sheltered space.

There is an established Sixth Form educational provision which offers an extensive range of qualifications taught on and off site.

We also have provision for day students, who access the school to partake in the educational day.

At Grateley House School we aim to provide consistent, diverse, enjoyable and structured learning opportunities through a waking day curriculum, seven days a week for all of the residential students.

We understand that not all students with ASC will learn new skills at the same pace. Our curriculum caters for students with a wide range of needs regardless of the speed of their progress.

Grateley House School believes that students are entitled to a curriculum that is characterised by breadth, balance, relevance, differentiation and progression. We take a personalised approach to the curriculum which is broadly based on the statutory requirements of the new national curriculum, but the teaching of subjects is adapted to meet the very particular needs of our students. In Key Stage 3, the curriculum emphasises the importance of key core subjects, whilst offering the full national curriculum. Our curriculum offers a range of options in Years 9 to 11 that can lead to accreditation and qualifications. There is also an opportunity for students to have short periods of work experience where appropriate; these may be on or off-site. Where possible the school places students with local employers and works with partner organisations to ensure the suitability of placements.

TIMETABLE	
Time	Lesson
09:00 – 09:20	Tutor
09:25 – 10:05	P1
10:10 – 10:50	P2
10:50 – 11:20	Break
11:25 – 12:05	P3
12:10 – 12:50	P4
12:50 – 13:35	Lunch
13:40 – 14:00	Tutor
14:05 – 14:45	P5
14:50 – 15:30	P6
15:30	Home

The onsite education is managed by Head of Education, who is part of the Senior Leadership Team. Grateley House School provides formal education for students for 38 weeks of the year.

We offer a wide range of qualifications including, GCSEs, Vocational and Functional Skills. All students have access to Personal, Social, Health and Citizenship Education.

Some of our older students in the Sixth Form, study A-Levels and BTEC Awards at school or local colleges of further education. Students are properly supported in the college environment monitored by the school's dedicated college coordinator.

In addition to academic attainment, students are provided with the opportunity to develop their full potential in the following areas:

- Physical health and wellbeing
- Independence, life skills and self-help
- Social skills and understanding
- Communication skills
- The development of relationships with adults and peers
- The ability to make informed choices
- Intellectual development and problem-solving
- Spiritual, moral, social, cultural and emotional fulfilment
- Positive self-esteem, self-awareness and self-confidence
- Leisure and self-occupying skills

Please refer to the Curriculum – Teaching and Learning policy for a breakdown of subjects by key stages.

ACTIVITIES AND FREE TIME

As part of our waking day curriculum, we consider time spent before and after school and at weekends to be of equal importance to that experienced during the school day. Consideration is always given to the students' chronological and developmental age when organising the activity programmes provided by the school. Students are assisted at such times, developing their skills in personal care, experiencing play and leisure activities and enhancing social and communication skills in a wide variety of supported yet realistic settings. Within that structure, students are offered a wide range of leisure activities which address their individual social, communication, personal and academic needs.

Activities throughout the week and at weekends are planned and co-ordinated by the care staff. Students' interests and hobbies, health and fitness are promoted through group and individual activities. Opportunities currently available include swimming activities, riding, shopping, crabbing, cycling, hiking, trips and visits to public settings such as Laser Quest, the cinema, skateboarding, country walks, fishing, snooker/pool, model making, music activities, gardening, arts and crafts, and relaxation activities. Many activities are offered on site, however other opportunities exist within the local area and further afield.

HEALTH AND WELLBEING

Our students have access to the support of a range of disciplines, including Clinical Psychology, Psychiatry, Speech and Language and Occupational Therapy. Each therapist is qualified and undertakes on-going professional supervision as part of the requirements for their registration with their relevant professional bodies. Our therapy team train and support staff to help make the whole school environment as beneficial as possible for the well-being, learning and development of every student.

The Consultant Child and Adolescent Psychiatrist ensures the impact of medication on a young person's health is regularly reviewed.

The School aims to ensure that all areas of need identified in the students' Education Health Care Plan are met. Having such a range of therapies available, delivered by experienced practitioners, who work as a team, is of great benefit in supporting our students to reach their full potential. The therapists also advise and inform the other departments within the school.

As a residential school, most students have their health needs met within their family homes. Each young person has a health care plan that is incorporated into their placement plan. Students have access to a GP, Dentist, Optician, and Paediatrician if required. The school also runs a weekly MDT (Multi-Disciplinary Team), with representation from the therapy team, the student's teaching assistant, Teacher and keyworker. The Therapy Team also use standardised measures appropriate to their various disciplines to monitor and evaluate the effectiveness of individual intervention work undertaken with our young people.

CONTACT WITH PARENTS / CARERS

The school ensures that regular, informal home contact is maintained through weekly telephone calls, email, Wi-Fi connectivity and regular newsletters. Parents are invited to attend all EHCP reviews, the first of which is held after a student's initial three-month assessment period and thereafter on an annual basis. The school encourages parental visits and every opportunity for liaison and communication is welcomed.

CHILD PROTECTION**A description of the school's approach to the monitoring and surveillance**

At Grateley House School, prospective students may visit for the day or stay overnight. There are several methods used to help keep the students safe. Some of these methods may be used all the time, and some only at night.

The school has CCTV in the grounds and car parks to monitor areas visitors can access during the day to ensure we know who is on the site. There is no CCTV inside the school buildings.

All houses have a keypad so only the staff and young people can access them. This keeps strangers out and everyone safe. All staff are available to help young people gain access to these doors if need be.

All houses have motion sensors installed on the doors; these are linked to a handheld device for staff to use, so should a student exit a house at night they are immediately alerted. These will only ever be used at night time. Fencing has been erected around the back of the premises to improve security for the students.

There are waking night staff allocated to each house during the night. They are on hand to help the students with any issues that may arise during the night. Students are expected to be in their own bedrooms during the night. The night staff regularly rotate around each house throughout the night to promote wakefulness and to safeguard the welfare of the students.

The fire precautions and emergency procedures are in line with the detailed policy set out in the detailed Health & Safety Policy. These procedures include fire safety training, fire evacuation drill, provision of fire extinguishers, fire notices, regular monitoring of fire doors, appliances and fire alarms. Our young people are regularly involved in both day and night fire drills to ensure they are familiar with the required procedures.

LEADERSHIP AND MANAGEMENT

The registered provider;

Cambian Asperger Syndrome Services Ltd

Andrew Sutherland

Operations Director - Education Services, CareTech Group

Metropolitan House

3 Darkes Lane

Potters Bar

Hertfordshire

EN6 1AG

Tel: 0208 7356150

Principal and Single Point of Contact for PREVENT (SPoC)

Name: Eva Pereira
Address: Grateley House School, Pond Lane, Andover, Hants, SP11 8TA
Tel: 01264 889751
Email: eva.pereira@cambianguroup.com

Eva Pereira is the Principal at Grateley House School and has significant experience in working with vulnerable children and young adults. Eva is committed to enabling and supporting students to be as independent as possible within their lives, ensuring they are given opportunities and experiences that make them step outside their comfort zones and challenges them to holistically further their personal development.

Head of Education

Name: Terry Kelly
Address: Grateley House School, Pond Lane, Andover, Hants, SP11 8TA
Tel: 01264 889751
Email: Terry.Kelly@cambianguroup.com

Terry is Head of Education at GHS and has significant experience as a senior leader in both mainstream and special education settings as well as in a local authority as Assistant Director of Education. She is dedicated to ensuring children and young people realise their aspirations and have the relevant skills, knowledge and qualifications in readiness for further education, training or employment, particularly those with learning difficulties. Her professional interests are raising educational standards and teacher professional development.

Head of Care

Name: Joshua Hand
Address: Grateley House School, Pond Lane, Andover, Hants, SP11 8TA
Tel: 01264 889751
Email: Joshua.hand@cambianguroup.com

Joshua has worked at Grateley House School for over 18 years covering many roles in the care sector. Joshua has been dedicated and passionate about the outcomes our young people can achieve, he has worked with the younger end of the school through Secondary and more recently with the 6th Form focusing on preparation for adulthood and developing independent living skills as the young people transition from the service and into the wider community.

Designated Safeguarding Lead

Name: Jean North
Address: Grateley House School, Pond Lane, Andover, Hants, SP11 8TA
Tel: 01264 889751
Email: jean.north@cambianguroup.com

Jean is the Designated Safeguarding Lead for Grateley House School. She has worked in the UK independent sector where she has served as a Deputy Head, Acting Head and headed Departments of History, Philosophy and Ethics, Drama, English IB and IB Social Anthropology. She has served as a resident Assistant house mistress caring for pupils from years 9 to 6th form. She is a qualified teacher holding a BA(Hons), Higher Education Diploma (Postgrad) and MSc.

She has taught both in the UK (maintained and independent) and abroad. She has a passion for keeping young people safe and empowering them to achieve their best.

Staffing

Teachers hold a range of teaching qualifications, including QTS and QTLS. Residential Care Staff have, or are working towards their RQF Level 3 as a minimum.

All staff undertake regular training to ensure their skills are current and up to date with the latest best practice. There is also a range of specialist support services including a Consultant Clinical Child and Adolescent Psychiatrist, Consultant Clinical Psychologist, Assistant Psychologists, Speech and Language Therapist, and Occupational Therapist.

MULTI-DISCIPLINARY TEAM

In recognition of the challenges presented by the students placed. The school is supported by the work of a Multi-disciplinary Therapy Team.

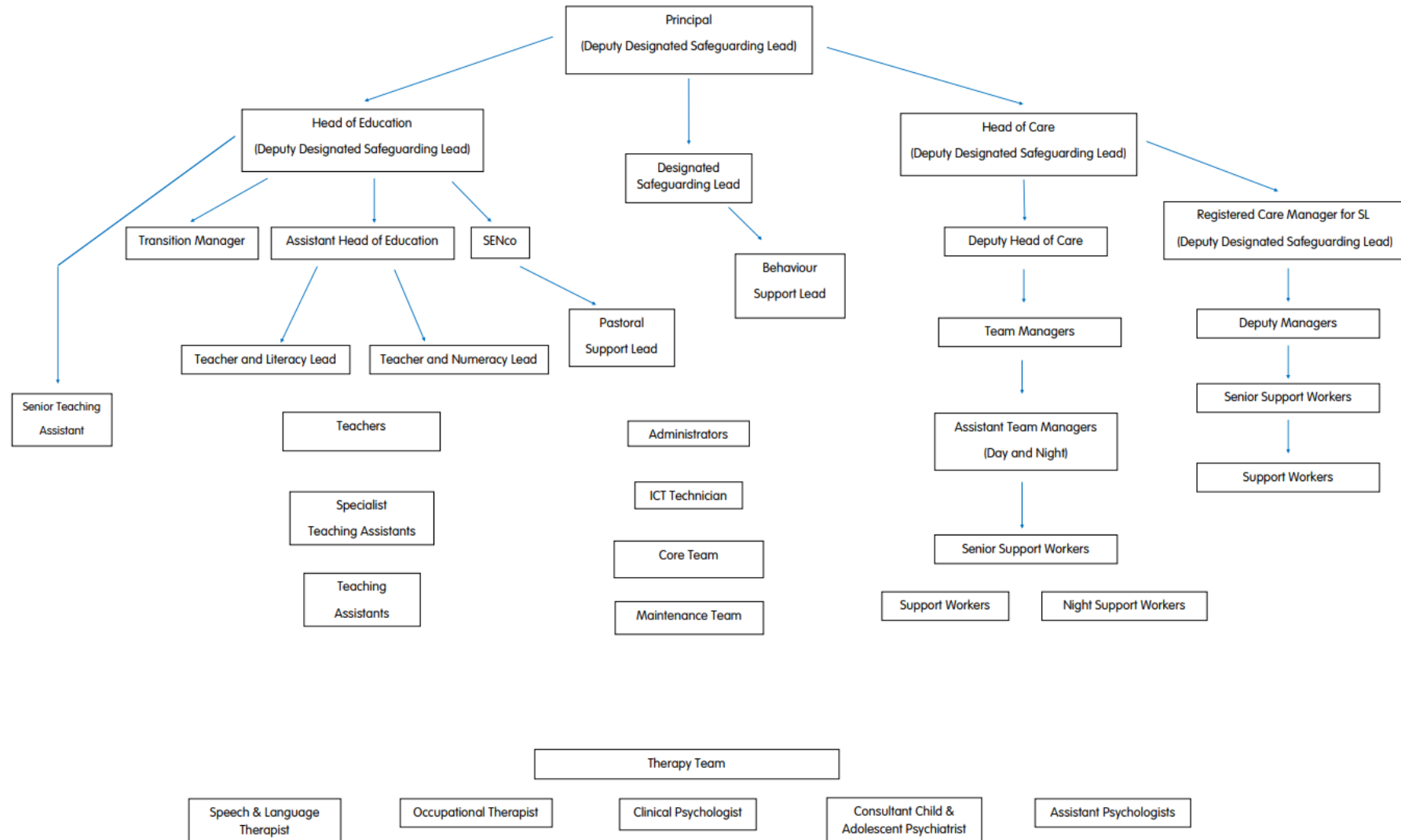
The Therapy Team consists of:

- Consultant Child and Adolescent Psychiatrist
- Consultant Clinical Psychologist
- Speech and Language
- Occupational Therapist
- Assistant Psychologists

Along with providing individual direct work to students to fulfil the requirements of their EHCPs. They also fulfil an essential function of support and guidance for staff. This includes individual support for key workers, group work for students and staff, formal training as part of inset days as well as informal sessions such as staff drop in sessions, advice and guidance relating to risk management and behaviour support and liaison with wider health professionals.

A detailed list of staff qualifications is available on request.

- Details of the management and staffing structure of the home, including the arrangements for the professional supervision of staff, including staff that provide education or health care.



STAFF SUPERVISION TRAINING AND SUPPORT

All staff receive regular supervision and annual appraisal as per the company policy. There is comprehensive induction training and staff also receive regular refresher training as well as job specific training. Training is either face to face or computer based through our online 'Myrus' programme. All care staff undertake the Level 3 Diploma for Residential Childcare and this is provided through an in-house service.

The Senior Leadership Team consists of the Principal, Head of Care, Head of Education and a Designated Safeguarding Lead. Teachers in the Education Department are supported by a team of full-time teaching assistants and as required, support workers from the residential settings. There is a Transition Manager who works with staff across the education and care settings to ensure a smooth transition for any student out of the school and into their future placement. Staff in the residential settings work in teams based within the students' living groups. The Head of Care is supported by Team Managers who oversee the running of the homes. Each House Manager is supported by an Assistant Team Manager, Senior Support Workers and Support Workers.

The Principal manages the Administrative team. The Administrative team supports the work undertaken within all parts of the home and school and they provide the first point of contact for those telephoning or visiting the premises. The Maintenance team are managed remotely by Cambian Estates.

INDUCTION, TRANSITION AND INDIVIDUAL SUPPORT

The majority of students are placed by their local education authority, sometimes funding is also supported by Social Services, Health Care or a private contributor.

Admissions can take place at any time during the year. Referrals and enquiries are made through the Cambian Commissioning Team or the Principal, and can be made by parents, local authorities, social services departments or health authorities. Visits from prospective parents and representatives of placing authorities are always welcome at any time.

Students are admitted following a thorough assessment by members of the school staff and there is a detailed admissions policy that can be viewed on the school website.

Placement enquiries: 0800 138 1184

Grateley House School is happy to provide any of the above-mentioned policies, an organisational chart and a school prospectus to parents and other stakeholders upon request.

Additional Contact Details

The Children's Commissioner for England:
The Office of the Children's Commissioner
Sanctuary Buildings
20 Great Smith Street
London
SW1P 3BT

Tel: 0800 528 0731

advice.team@childrenscommissioner.gsi.gov.uk

Child Protection Services:

NSPCC child protection helpline
Tel: 0808 800 5000 (adults)

Childline
Tel: 0800 1111

Advocacy Service:

NYAS – Giving a voice to children, young people and vulnerable adults
Helpline 0808 808 1001 (Weekdays 9am-8pm, Saturdays 10am-4pm)
Website: www.nyas.net
E-Mail: help@nyas.net

Independent Person – NMS 3:

NYAS Independent Person: Julie Prior

QUALIFICATIONS AND ACHIEVEMENTS

I have a B.Ed. Degree; a National Professional Qualification for Head teachers (NPQH) and I am trained as a Youth Mental Health First Aider and in health and safety (IOSH). I held the position of Director of Children's Services England for a national youth advocacy charity. As head teacher of two schools, I led on the SEND agenda.

EXPERIENCE

Proficient in regulation 44 and RSS 20 independent person service, I support a range of settings that include special schools, short breaks, and assessment homes from those starting their journey to those achieving outstanding Ofsted ratings. I enjoy supporting leaders, managers and their teams and I have a proven track record in helping to improve children's homes in this field. I understand the missing from care/county lines agenda, children subject to child protection plans and care leavers etc. having led on a wide portfolio of services for local authorities and private organisations across England.

I was the Safeguarding Lead for National Youth Advocacy Services, and I am well versed in Working Together 2018, Children's and Social Work Act 2017 and UNCRC

Telephone: 0808 808 1001
Email: help@nyas.net
Website: www.nyas.net