



Cambian Pengwern College

Sarn Lane, Ruddlan, Denbighshire, LL18 5UH

Cambian Pengwern College is an independent provider of specialist further education in North Wales, offering up to 52-week residential and day placements for young people aged 16 to 25 with a learning disability and complex needs.

Cambian Pengwern College is set in 29 acres of beautiful North Wales countryside near the historic village of Rhuddlan, close to the popular resort towns of Prestatyn and Llandudno. The college benefits from good rail / bus links and road networks.

The college is registered with the Care and Social Services Inspectorate Wales, (CSSIW) and Estyn who undertake regular and rigorous inspections in addition to our own internal quality assurance processes.

Student Profile

- Mixed gender, age 16-25
- 38-52 week residential and day placements
- Moderate to severe learning disabilities
- Autism Spectrum Disorder
- PMLD
- Down's Syndrome
- Communication difficulties
- Development disorders
- Challenging behaviour
- A broad range of complex needs
- Medical needs (experts in PEG feeding)

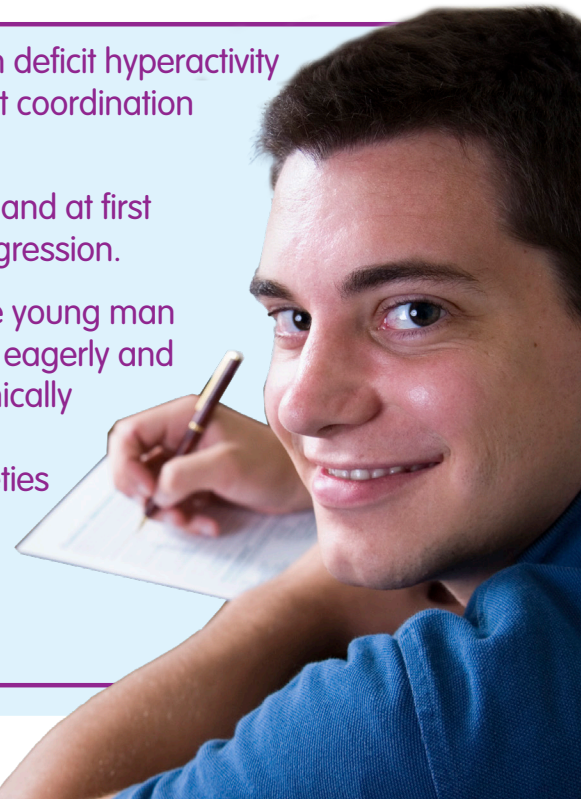
DAVID'S STORY

David* is a young man with a mixed diagnosis including attention deficit hyperactivity disorder, obsessive compulsive disorder, dyslexia, development coordination disorder and moderate to severe learning difficulties.

David joined Cambian Pengwern College as a residential learner and at first exhibited challenging behaviours such as verbal and physical aggression.

David has developed into a confident, happy, engaged and polite young man who has truly excelled and defied initial expectations. He worked eagerly and with enthusiasm in his final year of college and achieved academically and socially. David no longer requires continual 1:1 support. He developed effective coping mechanisms to self-regulate his anxieties and developed positive relationships with the staff and his peers.

*Name has been changed to protect identity



A combination of specialist education, person-centred therapeutic planning and measurement of progress can only result in the best outcomes for the people in our care.

We measure our student's progress in a number of different ways:

- National curriculum levels
- National accreditation achievement awards
- Individual Learning Plan Targets (ILP)
- Behaviour and social progress
- School based awards
- Economic well-being (financial skills/work experience)
- Being healthy
- Staying safe
- Enjoying life
- Positive contribution

OUTCOMES 2025

Below are our latest student outcomes:

3 x City and Guilds
Certifications in Skills
for Working Life

7 x City and Guilds
Certifications in
Personal Progress

2 x City Guilds
Diplomas in Personal
Progress - Pass

1 x WJEC Essential Skills
- Entry Level 2

2 x WJEC Essential Skills
- Entry Level 1

2 x Duke of Edinburgh
- Silver Awards

13 x Duke of Edinburgh
- Bronze Awards

3 x Agored
Pre Entry Units

Photos for illustrative purposes only

'A parent shared...

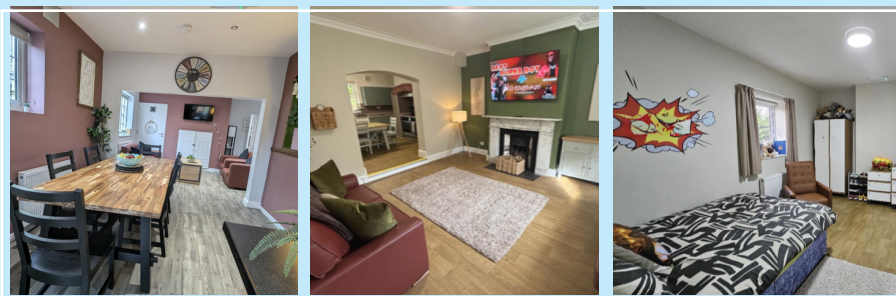
"Pengwern College care staff are amazing, our child is thriving... it's the perfect place for him." This reflects high family satisfaction and trust in the nurturing care provided.'

- CIW Inspection Report
October 2025

We offer six modern coach houses on campus and three community houses in St Asaph, creating warm, personalised homes for young people.

Each home is designed to feel safe, nurturing, and empowering, with fully personalised bedrooms and dedicated, consistent staff teams. The environment provides space, calm, and therapeutic support.

Rated **'Excellent'** Overall by **Care Inspectorate Wales**



Together, our homes and surroundings help young people build confidence, independence, and a true sense of belonging.

Our commitment to excellence has been recognised through **three "Excellent" ratings** awarded by the Care Inspectorate Wales (CIW) - a reflection of the high standards, compassion, and professionalism that define life at Pengwern.

[To make an enquiry click here](#) 