



Coronavirus (COVID-19) tests available for adult social care in England

Care Homes (Staff)

Do you have a suspected or current outbreak?
(At least two suspected or confirmed cases of COVID-19 in staff or residents)

Yes, a new suspected or confirmed outbreak

Yes – a current outbreak and the steps above for a new outbreak have been completed

No

Report to [Health Protection Team \(HPT\)](#) as soon as a case is suspected. **Testing available now.**

Once an outbreak is confirmed, the HPT will arrange testing for all residents and staff. The HPT will also arrange a follow up test after 4-7 days for residents and staff who tested negative on the first round of testing or who missed the initial test.

To find out which public health team covers your area visit:
<https://www.gov.uk/health-protection-team>

Continue the regular weekly testing cycle for staff*

If staff develop symptoms, they must not be tested in the care home. They should self-isolate and order a test through <https://www.gov.uk/get-coronavirus-test>

All staff should be retested* again 28 days after the last resident or staff had a positive test result or showed coronavirus-like symptoms. If no further cases are identified at this point, the outbreak is considered to have ended. Any further cases after this point is a new outbreak and the care home must contact the HPT.

Apply for regular testing and follow whole home retesting cycle.*

- **Weekly PCR and LFD testing** of all staff on the same day **at the same time**, including bank and agency staff.
- **Additional mid-weekly LFD test in between PCR tests.**
- **In tier 4, if there is a positive case in the care home** from either staff or residents with PCR or LFD, all staff should test daily for 7 days.

All adult care homes registered with CQC are eligible for retesting using the organisation registration portal. See guidance at: <https://www.gov.uk/apply-coronavirus-test-care-home>

***Note:** Staff who have been diagnosed with COVID-19 should not be included in regular PCR testing until 90 days after:

- Their initial onset of symptoms
- Or, if asymptomatic when tested, their positive test result

If they develop new symptoms, they should be retested immediately. [See guidance.](#)

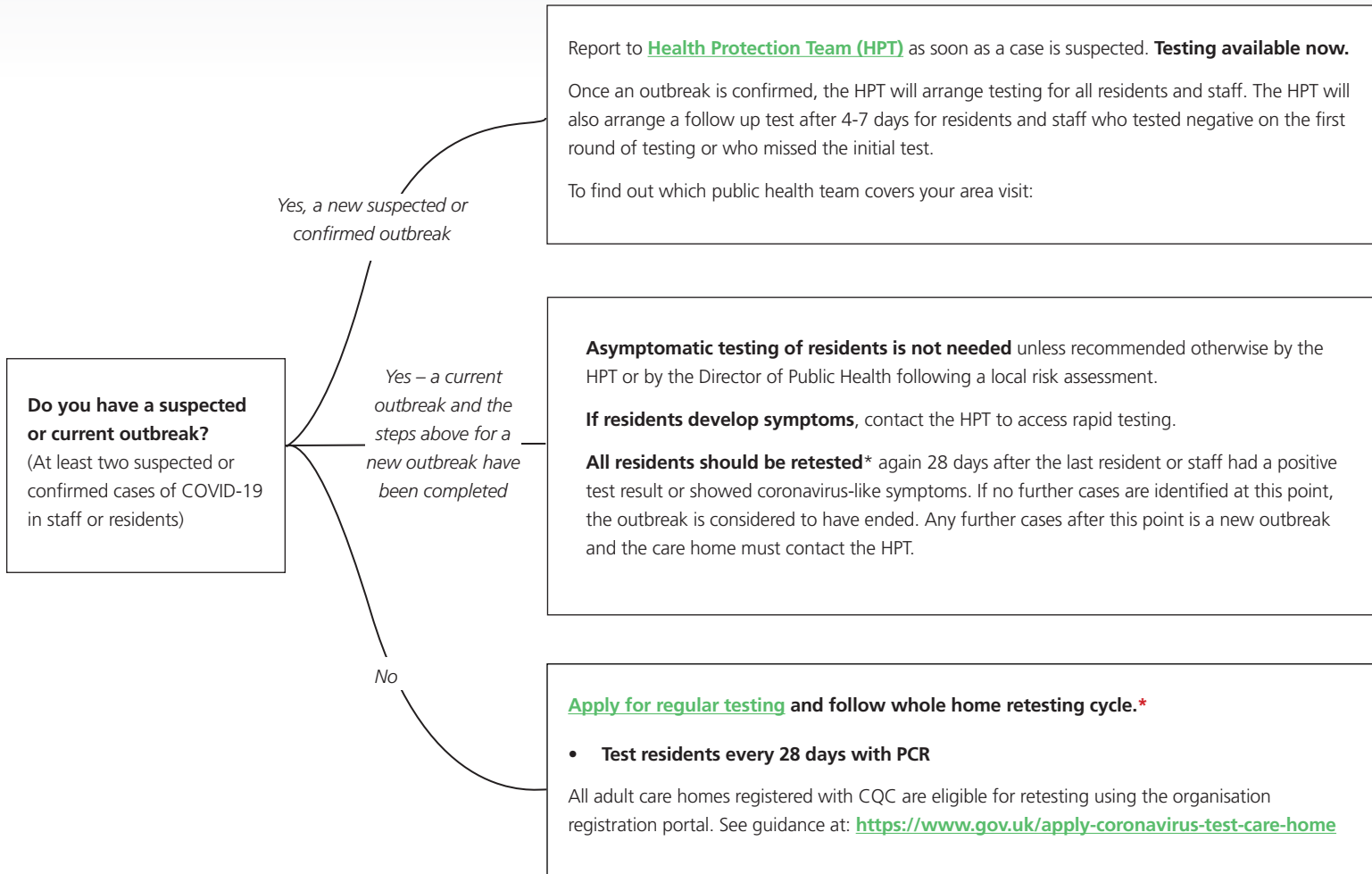
LFD tests can be used straight away after an isolation period. Staff do not need to wait 90 days to use LFD tests.

Staff returning to work after a period of leave: Any staff returning to work after a period of leave which has resulted in them missing their weekly PCR test should take an LFD test at the beginning of their shift. For further information, please visit: <https://www.gov.uk/government/publications/coronavirus-covid-19-lateral-flow-testing-of-visitors-in-care-homes>

Where staff work in multiple locations, test staff with LFD immediately before shift if individual has worked somewhere else since the last time they worked in that care home.



Care Homes (Residents)



***Note:** Residents who have been diagnosed with COVID-19 should not be included in regular PCR testing until 90 days after:

- Their initial onset of symptoms
- Or, if asymptomatic when tested, their positive test result

If they develop new symptoms, they should be retested immediately.

[See guidance.](#)

LFD tests can be used straight away after an isolation period.



Care Homes (Visitors & Visiting professionals)

Friend or family visitor?

***Note:** Tier 4 homes should only facilitate outdoor and screened visits. In addition, in the event of an outbreak in a care home in any tier, the homes should immediately stop visiting (except in exceptional circumstances such as end of life) to protect vulnerable residents, staff and visitors. For more information about visitor guidance, visit: <https://www.gov.uk/government/publications/visiting-care-homes-during-coronavirus>

All* family and friends visitors to care homes should be tested each time they visit with an LFD test.

If a visitor receives a negative result, visits can proceed as long as visitors wear appropriate PPE throughout the visit and follow all infection prevention and control measures.

If a visitor receives an invalid result, then retest the visitor with an LFD. If they receive an invalid result again, visitors can have a visit similar to someone who has not been tested, at the discretion of each care home.

If a visitor receives a positive result, they should conduct a confirmatory PCR and register this at the care home using the 'home' registration route. Then the visitor should go home to self-isolate immediately to await their result.

For further visitor testing guidance, see here: <https://www.gov.uk/government/publications/coronavirus-covid-19-lateral-flow-testing-of-visitors-in-care-homes>

Visiting professional?

CQC Inspectors

We have provided CQC with PCR testing for their inspectors. CQC inspectors should be tested weekly.

NHS Staff

NHS staff should be tested twice a week using LFD through their employer

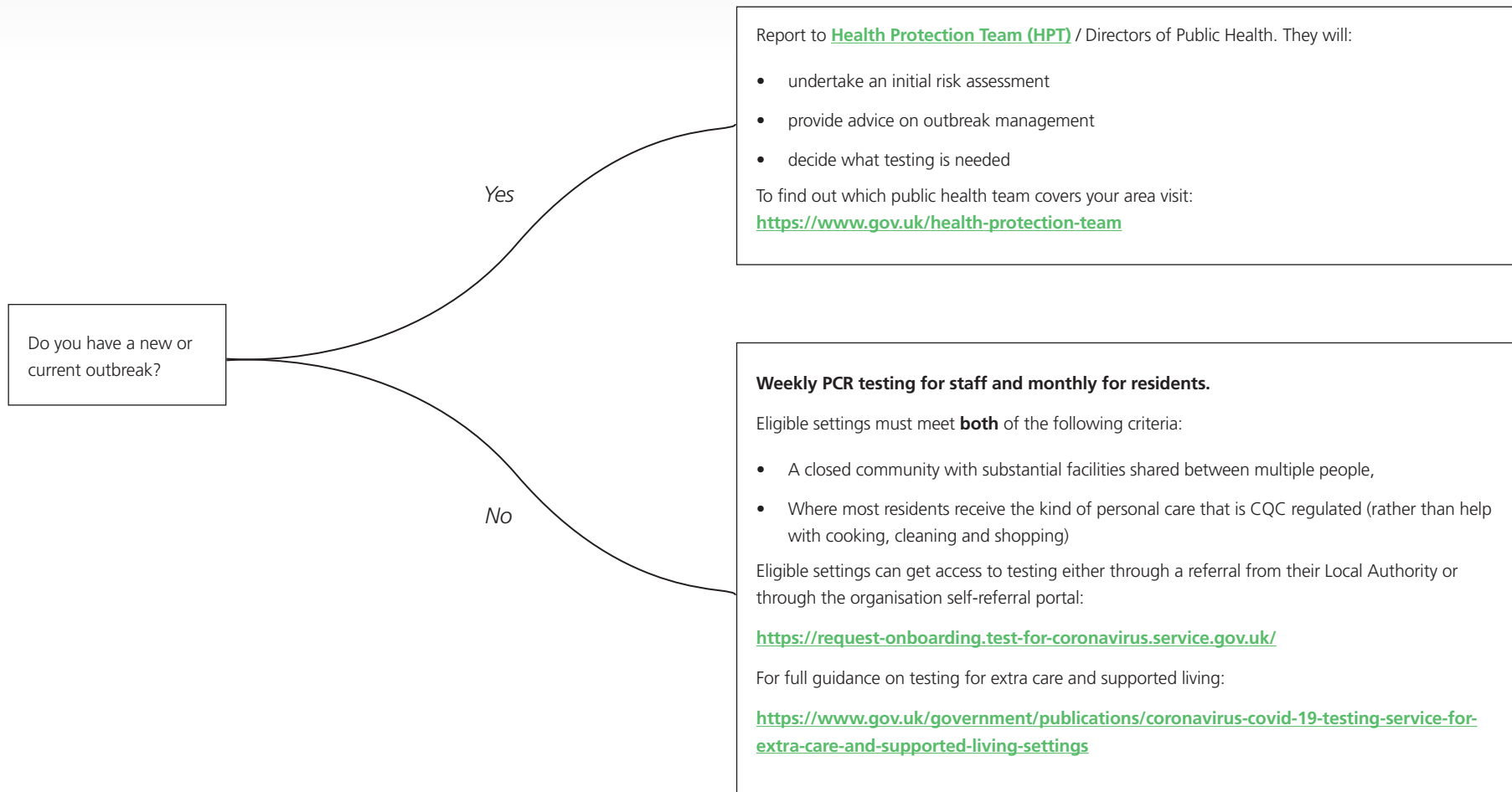
Other Visiting Professionals

All visiting professionals who are not regularly tested through another route such as NHS staff or CQC inspectors, should be tested on every visit in the same manner as visitors.

For further guidance on testing for visiting professionals, see here: <https://www.gov.uk/government/publications/coronavirus-covid-19-lateral-flow-testing-of-visitors-in-care-homes>



High-risk Extra Care and Supported Living settings





Home care testing

Which type of home care?

Domiciliary care

All CQC registered domiciliary care workers should conduct weekly PCR testing. Organisations can order tests for their staff using their UON from <https://request-testing.test-for-coronavirus.service.gov.uk/>

All homecare organisations registered with CQC providing personal care are eligible for retesting using the organisation registration portal.

Staff who have been diagnosed with COVID-19 should not be included in regular PCR testing until 90 days after:

- Their initial onset of symptoms
- Or, if asymptomatic when tested, their positive test result

If they develop new symptoms, they should be retested immediately. [See guidance.](#)

For full guidance on testing for domiciliary care testing, please see: <https://www.gov.uk/government/publications/coronavirus-covid-19-testing-for-homecare-workers>

Personal assistants

We will be expanding testing further to all other homecare workers, including personal assistants in a phased roll-out. We will provide further details in due course about how personal assistants can access testing.



Coronavirus (COVID-19) testing for adult social care

Anyone with symptoms can get tested for coronavirus by visiting www.gov.uk/get-coronavirus-test

Further Care Home Information

Testing for people being admitted to a care home

People being discharged from hospital to a care home are tested at hospital before discharge. For further information, visit: [guidance on admission, isolation and test](#). This guidance will continue to be updated regularly so check back every retest cycle.

Testing for people being admitted to a care home from the community

We have published a [service model](#) for care homes to follow when testing individuals moving from the community into a care home.

Further ASC Information

Testing Strategy

Our testing strategy for adult social care is based on scientific advice on relative priorities and available testing capacity in order to limit the spread and save lives. We are continuing to develop our testing strategy for adult social care and we are currently running pilots and developing evidence-based policy on testing in other areas of adult social care as testing capacity increases. We will continue to review our social care testing strategy for adult social care in light of the latest evidence, available capacity and new testing innovations. Anyone with suspected coronavirus symptoms in these settings can access testing through the self-referral portal on [gov.uk/coronavirus](https://www.gov.uk/coronavirus)

Testing and COVID-19 Vaccine

Testing should continue as per current guidance until further notice, even for staff and residents who have received the vaccine. This is because no vaccine is completely effective.

Antibody Testing

All paid adult social care staff are able to access an at-home antibody test. This includes all staff working in residential care, homecare and local authority adult social care departments. For more information and to access an antibody test, visit: <https://www.gov.uk/register-coronavirus-antibody-test>

Further advice

If you have any issues with registration, delivery or collection of test kits, contact the Coronavirus Testing call centre on 119. It's open from 07:00 to 23:00 every day.

Any adult social care setting with a suspected or confirmed COVID-19 outbreak should contact their local Health Protection Team. Contact details are available here: <https://www.gov.uk/health-protection-team>