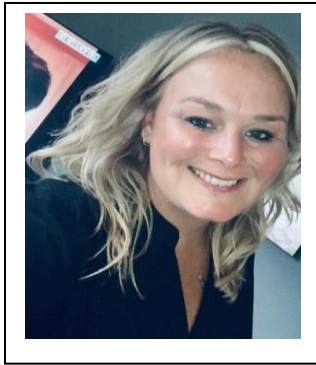




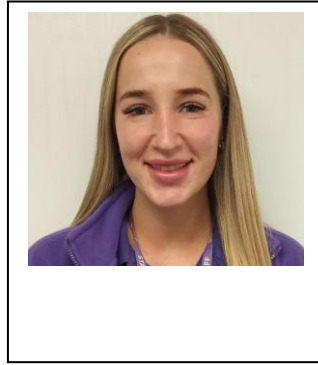
GREAT DUNMOW SCHOOL

Safeguarding Policy -

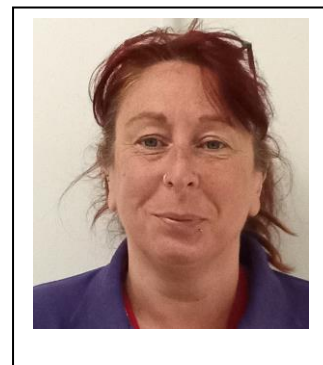
(2) A guide to the role of the DSL



Tonia Lewis
DSL



Olivia Lampard
DDSL



Deborah Hasler
DDSL

Introduction

This policy is written in line with Keeping Children Safe in Education (KCSiE) 2023 and Working Together to Safeguard Children 2018. This policy is written for schools/colleges in England only.

Wider Policies support this Child Protection Policy. All are numbered and sit alongside to create the school safeguarding policy.

1. Child Protection Policy
2. The Role of the DSL Policy
3. Child on Child Abuse Policy
4. Filtering and Monitoring Policy
5. Managing Low Level Concerns Policy
6. Absent from Education Policy
7. Schools Safer Recruitment Policy
8. Managing Contextual Risks to Children

Aims of the policy

The aims of this policy are to inform staff of the role of the DSL, giving clear guidance of the DSL's role, particularly including the following:

- Managing referrals
- Working with others
- Information Sharing and managing the Child Protection File
- Raising awareness of Safeguarding issues – locally, nationally or globally
- Training, knowledge and skills
- Providing support to staff
- Understanding the views of children
- Holding and Sharing information

The Designated Safeguarding Lead (DSL)

The DSL is an appointed senior member of staff from the school/college leadership team. Governing bodies and proprietors should ensure the designated safeguarding lead has the appropriate status and authority within the school or college to carry out the duties of the post. This person cannot be the proprietor.

The DSL will take lead responsibility for safeguarding and child protection (including online safety and understanding the filtering and monitoring systems and processes in place).

Schools and colleges may decide to have one or more deputy designated safeguarding lead. Any deputy (or deputies) should be trained to the same standard as the designated safeguarding lead. Whilst the activities of the designated safeguarding lead can be delegated to appropriately trained deputies, the ultimate lead responsibility for child protection, as set out above, remains with the designated safeguarding lead, this lead responsibility should not be delegated

Their additional responsibilities include providing advice and support to other staff on child welfare, safeguarding and child protection matters, taking part in strategy discussions and inter-agency meetings, and/or supporting other staff to do so, and contributing to the assessment of children.

There can only be one DSL and depending on the size or complexity of the school, a number of deputy DSLs can be appointed to support.

The role of the DSL

Availability during term time the designated safeguarding lead (or a deputy) should always be available (during school or college hours) for staff in the school or college to discuss any safeguarding concerns.

Whilst generally speaking the designated safeguarding lead (or deputy) would be expected to be available in person, it is a matter for individual schools and colleges, working with the designated safeguarding lead, to define what "available" means and whether in exceptional circumstances availability via phone and/or other such media is acceptable.

It is a matter for individual schools and colleges and the designated safeguarding lead, to arrange adequate and appropriate cover arrangements for any out of hours/out of term activities.

Manage referrals

The designated safeguarding lead is expected to refer cases:

- of suspected abuse and neglect to the local authority children's social care as required and support staff who make referrals to local authority children's social care
- to the Channel programme where there is a radicalisation concern as required and support staff who make referrals to the Channel programme
- where a person is dismissed or left due to risk/harm to a child to the Disclosure and Barring Service as required, and
- where a crime may have been committed to the Police as required. NPCC - When to call the police¹ should help understand when to consider calling the police and what to expect when working with the police.

Working with others

The designated safeguarding lead is expected to:

- act as a source of support, advice and expertise for all staff
- act as a point of contact with the safeguarding partners
- liaise with the headteacher or principal to inform him or her of issues- especially ongoing enquiries under section 47 of the Children Act 1989 and police investigations. This should include being aware of the requirement for children to have an Appropriate Adult. Further information can be found in the Statutory guidance - PACE Code C 2019.

¹ [when-to-call-the-police--guidance-for-schools-and-colleges.pdf \(npcc.police.uk\)](https://www.npcc.police.uk/when-to-call-the-police-guidance-for-schools-and-colleges.pdf)



- as required, liaise with the “case manager” and the local authority designated officer(s) (LADO) for child protection concerns in cases which concern a staff member
- liaise with staff (especially teachers, pastoral support staff, school nurses, IT technicians, senior mental health leads and special educational needs coordinators (SENCO), or the named person with oversight for SEND in a college and senior mental health leads on matters of safety and safeguarding and welfare (including online and digital safety) and when deciding whether to make a referral by liaising with relevant agencies so that children’s needs are considered holistically
- liaise with the senior mental health lead and, where available, the mental health support team, where safeguarding concerns are linked to mental health
- promote supportive engagement with parents and/or carers in safeguarding and promoting the welfare of children, including where families may be facing challenging circumstances
- work with the headteacher and relevant strategic leads, taking lead responsibility for promoting educational outcomes by knowing the welfare, safeguarding and child protection issues that children in need are experiencing, or have experienced, and identifying the impact that these issues might be having on children’s attendance, engagement and achievement at school or college.

This includes: ensuring that the school or college knows who its cohort of children who have or have had a social worker are, understanding their academic progress and attainment, and maintaining a culture of high aspirations for this cohort, and supporting teaching staff to provide additional academic support or reasonable adjustments to help children who have or have had a social worker reach their potential, recognising that even when statutory social care intervention has ended, there is still a lasting impact on children’s educational outcomes.

Information sharing and managing the child protection file

The designated safeguarding lead is responsible for ensuring that child protection files are kept up to date. Information should be kept confidential and stored securely.

It is good practice to keep concerns and referrals in a separate child protection file for each child.

Records should include:

- a clear and comprehensive summary of the concern
- details of how the concern was followed up and resolved
- a note of any action taken, decisions reached and the outcome.

We recognise that in some settings there may be a different strategic lead for promoting the educational outcomes of children who have or have had a social worker, particularly in larger schools or colleges. Where this is the case, it is important that the DSL works closely with the lead to provide strategic oversight for the outcomes of these children and young people.

They should ensure the file is only accessed by those who need to see it and where the file or content within it is shared, this happens in line with information sharing advice as set out in Part one and Part two of KCSiE 2023.

Where children leave the school or college (including in year transfers) the designated safeguarding lead should ensure their child protection file is transferred to the new school or college as soon as possible, and within 5 days for an in-year transfer or within the first 5 days of the start of a new term. This should be transferred separately from the main pupil file, ensuring secure transit, and confirmation of receipt should be obtained. Receiving schools and colleges should ensure key staff such as designated safeguarding leads and special educational needs co-ordinators (SENCO) or the named person with oversight for SEND in colleges, are aware as required.

Lack of information about their circumstances can impact on the child's safety, welfare and educational outcomes. In addition to the child protection file, the designated safeguarding lead should also consider if it would be appropriate to share any additional information with the new school or college in advance of a child leaving to help them put in place the right support to safeguard this child and to help the child thrive in the school or college. For example, information that would allow the new school or college to continue supporting children who have had a social worker and been victims of abuse and have that support in place for when the child arrives.

Raising awareness

The designated safeguarding lead should:

- ensure each member of staff has access to, and understands, the school's or college's child protection policy and procedures, especially new and part-time staff
- ensure the school's or college's child protection policy is reviewed annually (as a minimum) and the procedures and implementation are updated and reviewed regularly, and work with governing bodies or proprietors regarding this
- ensure the child protection policy is available publicly and parents know that referrals about suspected abuse or neglect may be made and the role of the school or college in this
- link with the safeguarding partner arrangements to make sure staff are aware of any training opportunities and the latest local policies on local safeguarding arrangements, and
- help promote educational outcomes by sharing information about welfare, safeguarding, and child protection issues that children who have or have had a social worker are experiencing with teachers and school and college leadership staff.

Training, knowledge and skills

The designated safeguarding lead (and any deputies) should undergo training to provide them with the knowledge and skills required to carry out the role. This training should be updated at least every two years.

The designated safeguarding lead (and any deputies) should also undertake Prevent awareness training.

Training should provide designated safeguarding leads with a good understanding of their own role, how to identify, understand and respond to specific needs that can increase the vulnerability of children, as well as specific harms that can put children at risk, and the processes, procedures and responsibilities of other agencies, particularly local authority children's social care, so they:

- understand the assessment process for providing early help and statutory intervention, including local criteria for action and local authority children's social care referral arrangements
- have a working knowledge of how local authorities conduct a child protection case conference and a child protection review conference and be able to attend and contribute to these effectively when required to do so
- understand the importance of the role the designated safeguarding lead has in providing information and support to local authority children social care in order to safeguard and promote the welfare of children (such as information about concerns and children involved)
- understand the lasting impact that adversity and trauma can have, including on children's behaviour, mental health and wellbeing, and what is needed in responding to this in promoting educational outcomes
- are alert to the specific needs of children in need, those with special educational needs and disabilities (SEND), those with relevant health conditions and young carers
- understand the importance of information sharing, both within the school and college, and with the safeguarding partners, other agencies, organisations and practitioners
- understand and support the school or college with regards to the requirements of the Prevent duty and are able to provide advice and support to staff on protecting children from the risk of radicalisation
- are able to understand the unique risks associated with online safety and be confident that they have the relevant knowledge and up to date capability required to keep children safe whilst they are online at school or college
- can recognise the additional risks that children with special educational needs and disabilities (SEND) face online, for example, from bullying, grooming and radicalisation and are confident they have the capability to support children with SEND to stay safe online
- obtain access to resources and attend any relevant or refresher training courses, and
- encourage a culture of listening to children and taking account of their wishes and feelings, among all staff, in any measures the school or college may put in place to protect them.

In addition to the formal training set out above, their knowledge and skills should be refreshed (this might be via e-bulletins, meeting other designated safeguarding leads, or simply taking time to read and digest safeguarding developments) at regular intervals, as required, and at least annually, to allow them to understand and keep up with any developments relevant to their role.

Providing support to staff

Training should support the designated safeguarding lead in developing expertise, so they can support and advise staff and help them feel confident on welfare, safeguarding and child protection matters.

This includes specifically to:

- ensure that staff are supported during the referrals processes, and
- support staff to consider how safeguarding, welfare and educational outcomes are linked, including to inform the provision of academic and pastoral support.

Understanding the views of children

It is important that all children feel heard and understood. Therefore, designated safeguarding leads (and deputies) should be supported in developing knowledge and skills to:

- encourage a culture of listening to children and taking account of their wishes and feelings, among all staff, and in any measures the school or college may put in place to protect them, and
- understand the difficulties that children may have in approaching staff about their circumstances and consider how to build trusted relationships which facilitate communication.

Holding and sharing information

The critical importance of recording, holding, using and sharing information effectively is set out in Parts one, two and five of KCSiE, and therefore the designated safeguarding lead should be equipped to:

- understand the importance of information sharing, both within the school and college, and with other schools and colleges on transfer including in-year and between primary and secondary education, and with the safeguarding partners, other agencies, organisations and practitioners
- understand relevant data protection legislation and regulations, especially the Data Protection Act 2018 and the UK General Data Protection Regulation (UK GDPR), and
- be able to keep detailed, accurate, secure written records of concerns and referrals and understand the purpose of this record-keeping

Review

This Policy was written on 08 November 2023. A review will be annually as a minimum.

However, subject to a significant safeguarding concern this policy and all other attached policies will be reviewed and monitored as part of a lessons learned review.

Written by:

This policy was written by Matt Nicholls – Head of Policy Children’s Services, it was reviewed by Christina Leath – Group Safeguarding Director. This policy has



Policies

been reviewed by the DSL of the School and agreed by the head of the Governance Board.

