



Employability Coordinator



Helps students build confidence, independence, and positive workplace behaviours

Delivers employability qualifications and engaging sessions focused on workplace skills



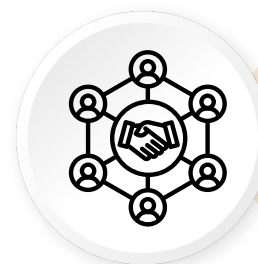
Builds strong relationships with inclusive, supportive employers

Sources and develops meaningful work experience placements tailored to students' interests, strengths, and individual support needs



Supports students to prepare for life beyond college

Supports students to advocate for themselves, make informed choices, and have their voices heard



Works closely with families, teaching staff, and external partners for a joined-up approach

Collaborates with the wider team to support students to make progress towards their EHCP outcomes



Champions high aspirations and celebrates every step of learner progress and success

Provides tailored support for smooth transitions into further and higher education, training, supported internships, or employment



Sam Wilsden

Employability Coordinator

Independent Career Information and Advice

A careers advisor appointment is an opportunity for students to seek guidance, plan their future and make informed choices about their next steps.

In the appointment students can:

- Talk about their interests and skills.
- Get advice on jobs, college courses, apprenticeships and work experience.
- Map out possible progression routes.



Louise Evenden

Independent Careers Adviser

Louise also offers appointments for parents and carers, providing time and space to discuss future pathways and next steps in a clear, supportive way. These conversations are designed to help parents feel confident and well-informed, so they can fully support their young person as they move into the next stage of their journey.

Appointments can explore a wide range of options, including further education, training, supported pathways, and employment, with guidance tailored to each student's strengths, aspirations, and support needs.

Cambian Wing College offers certified Work Preparation qualifications



Interview Skills



CV Writing



Employability Skills



Health & Safety



Portfolio Building



Responsible Work Practice

Employability Days

Employability Days take place once each term and offer students a wide range of opportunities to develop their skills, knowledge, and career awareness. Each Employability Day focuses on one of the following three key themes:



Volunteering

- Workshops with run by local charities.
- A range of volunteering opportunities including for all students.



Employer Interactions

- Workshops lead by employers and apprenticeship providers.
- Visits to a range of workplaces.



Careers Fair

- Workshops aimed at developing employability and networking skills.
- Annual trip to the Careers and Apprenticeship Show.
- Opportunities to visit the SEND Careers Fair.



Work Experience

BUILDING CONFIDENCE, INDEPENDENCE & REALWORLD SKILLS

We offer bespoke work experience placements that are tailored to each student's vocational interests, strengths, and individual needs.

Every placement is matched to the student, ensuring it is meaningful and supports their long-term aspirations.

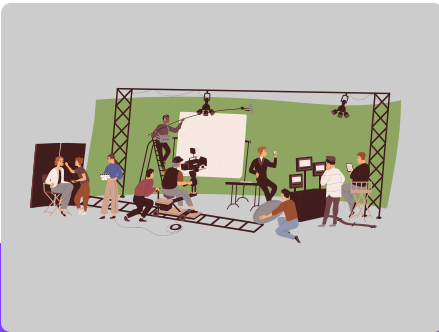
Students receive ongoing support to help them access and succeed in their placements. This includes preparation before starting, regular check-ins while on placement, and collaboration with employers to ensure the right adjustments and support are in place.

Our specialist approach helps students build confidence, independence, and real-world skills in a supportive and inclusive environment.



Through flexible planning and close partnership with employers, families, and staff, we ensure work experience is a positive, empowering step.

Employer Partners



Pooler
Lighthouse



Diverse Abilities



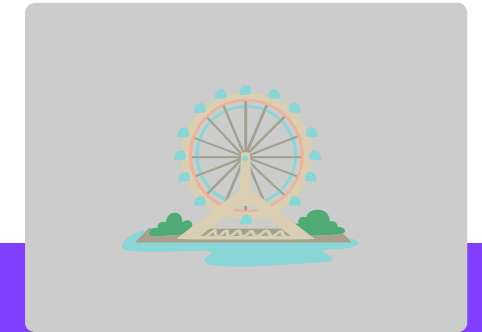
Bournemouth Food
Bank



Bournemouth
Natural Science
Society



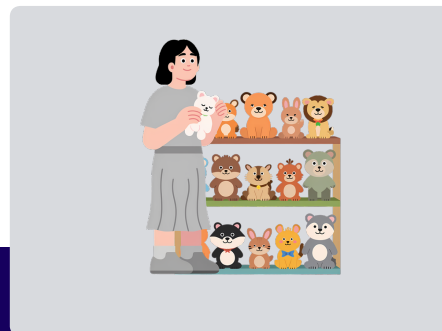
Dorchester Hospital



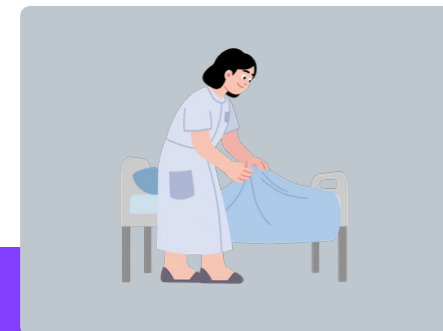
Bournemouth Tourist
Information Centre



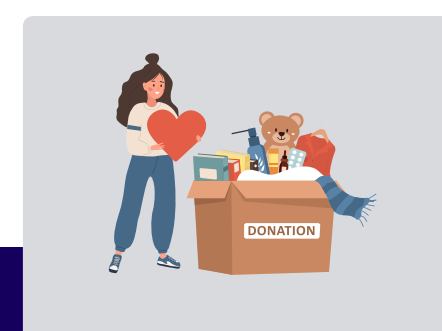
The Yellow Bus
Project



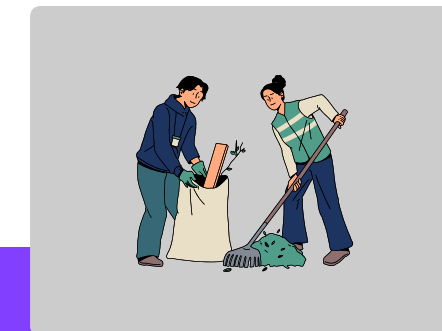
The Entertainer



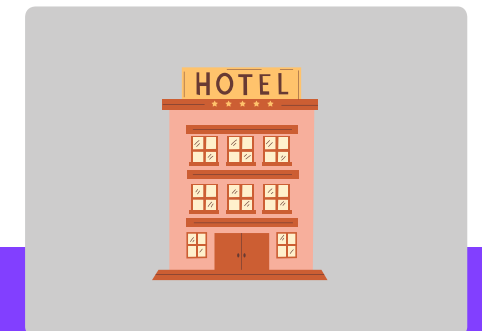
Colten Care



Dorset Children's
Foundation



The Parks Foundation



Marsham Court Hotel

The 8 Gatsby Benchmarks

1

A stable careers programme

Careers education and guidance is known and understood by pupils, parents and carers, staff, governors, employers and other agencies.

2

Learning from career and labour market information

All pupils, parents and carers, teachers and staff who support pupils have access to good-quality, up-to-date information about future pathways, study options and labour market opportunities.

3

Addressing the needs of each young person

Our careers programme uses a holistic approach, collaborating with specialist teams to ensure our neurodiverse pupils are supported as they navigate their concerns about any barriers to career progression.

4

Linking curriculum learning to careers

Subject teachers highlight the progression routes for their subject and the relevance of the knowledge and skills developed in their subject for a wide range of career pathways.

5

Encounters with employers and employees

Every pupil has multiple opportunities to learn from employers about work, employment and the skills that are valued in the workplace. This is delivered through a range of enrichment opportunities including visiting speakers, enterprise schemes, and pupils own paid work.

6

Experiences of workplaces

Every learner is offered opportunities to gain first-hand experiences of workplaces to help their exploration of career opportunities and expand their networks.

7

Encounters with further and higher education

Cambian Wing College has strong links with our local universities and offers a variety of trips to engage in university workshops, taster days, campus tours and tours of student halls.

8

Personal guidance

Every pupil has the opportunity for for guidance meetings with a careers adviser. Our Employability Coordinator works closely with the careers adviser, SENCO and other key staff to ensure personal guidance is effective and embedded in the careers programme.

What Ofsted Says!

"Students receive highly effective career information and guidance about their next steps."

"Students attend informative events, such as university open events, career fairs and a weekly lesson with an employment coach."

"Specialist staff provide highly personalised support to students to achieve their future education or employment goals and greater independence in their lives."

"Students highly value the specialist support they receive from an employment coach and complete qualifications related to work preparation."

"Students are well prepared to participate in well - planned internal and external work experiences, including at local employers, which are appropriate to their stage of learning. "

"All students have tailored and achievable targets that are well informed by their career discussions with staff. "

"Students are well prepared to participate in well - planned internal and external work experiences, including at local employers, which are appropriate to their stage of learning. "

"Staff effectively support students in developing the skills and behaviours they need to gain employment."

"All students have tailored and achievable targets that are well informed by their career discussions with staff. "



EVERYONE HAS A

PERSONAL BEST